

**Artemide**

# Artemide Alphabet of Light Linear LED Suspension

LA5925

SOURCE: <https://www.davidvillagelighting.co.uk/product/Artemide-Alphabet-of-Light-Linear-LED-Suspension/19905>



## PRODUCT DESCRIPTION

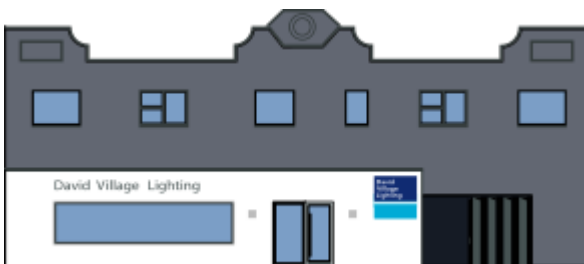
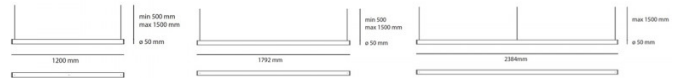
Designer: BIG

### Alphabet of Light Linear by Artemide

BIG (Bjarke Ingels Group) starts from an abacus of fundamental geometries to design a new font that will translate into light, an alphabet used to write and to express thoughts, a device to give shape to spaces. It allows to design light in space by using words. Alphabet of light is a language based on light. By combining these simple geometric modules with each other you can create numerous simple or more complex, linear and curved light functions. You can also choose to mix and match your Alphabet of Light lights with the [Circular collection](#).

## PRODUCT SPECIFICATION

- Light** 120 - 35W, 3000K, 3484 lumens
  - Source:** 180 - 50W, 3000K, 5226 lumens  
240 - 63W, 3000K, 6968 lumens
  - IP Code:** 20
  - Dimming:** Dimmable via Push/Dali dimming systems. Please consult your electrician, additional wiring may be required on site.
  - Dimensions:** 120 - 120 x 5 cm  
180 - 179.2 x 5 cm  
240 - 238.4 x 5 cm
- 0.5-1.5m cord length



**For all sales and technical enquiries, please contact:**

+44 (0)114 263 4266

[info@davidvillagelighting.co.uk](mailto:info@davidvillagelighting.co.uk)

[www.davidvillagelighting.co.uk](http://www.davidvillagelighting.co.uk)