

# Northern Northern Reveal LED Pendant

LA5878

SOURCE: <https://www.davidvillagelighting.co.uk/product/Northern-Reveal-LED-Pendant/19834>



## PRODUCT DESCRIPTION

**Designer:** Silje Nesdal

### Northern Reveal Pendant

Designer Silje Nesdal debuted at Northern with her design for the Reveal Pendant. This pendant features a glass shade with a LED light tube encased within, which creates an impactful statement. Because each shade is hand-blown by master craftsmen, they will vary slightly from piece to piece, making each pendant unique. The result is a fusion of contemporary style with traditional techniques.

The smooth curves and pale colours create a soft, delicate feel, creating an elegant feel in the room it resides in. The Reveal Pendant can be displayed individually or in a cluster, in altering sizes to create a striking display. The light emitted is a diffused and glare-free glow, which creates a warm, welcoming ambience in any interior. The Reveal can be installed in domestic or commercial settings to showcase the beauty of simplicity.

## PRODUCT SPECIFICATION

**Light Source:** 10W, 3000K, 900 Lumens

**IP Code:** 20

**Dimming:** Dimmable via mains phase dimming.

**Dimensions: Small:**

Shade: Ø35cm

Light Source: 27.5cm

Ceiling Canopy: Ø14cm x 7cm

Cable Length: 370cm

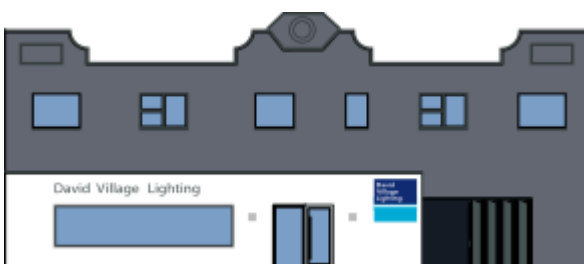
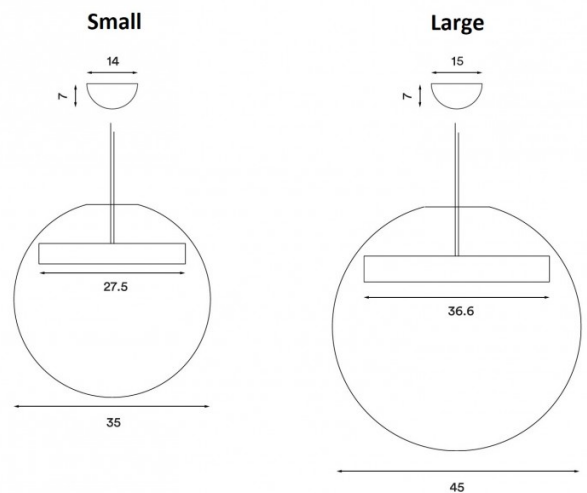
**Large:**

Shade: Ø45cm

Light Source: 36.6cm

Ceiling Canopy: Ø15cm x 7cm

Cable Length: 370cm



**For all sales and technical enquiries, please contact:**

+44 (0)114 263 4266

[info@davidvillagelighting.co.uk](mailto:info@davidvillagelighting.co.uk)

[www.davidvillagelighting.co.uk](http://www.davidvillagelighting.co.uk)