

# Northern Northern Ombre Table Lamp

LA5877

SOURCE: <https://www.davidvillagelighting.co.uk/product/northern-ombre-table-lamp/19833>



## PRODUCT DESCRIPTION

### Northern Ombre Table

Ombre is a multifaceted design, comprised of a compact base, a LED light source and an adjustable shade. Ask the designer about Ombre's essentials and he'll explain that there are only two: shadow and light. The interplay between them starts with the light source, which projects white light upwards from the base directly onto the shade.

Inspired by the shape of a tree leaf, the adjustable shade captures the light in its contours and reflects it onto the surrounding surfaces. The base and shade are made in steel and seamlessly powder coated in matt black or beige.

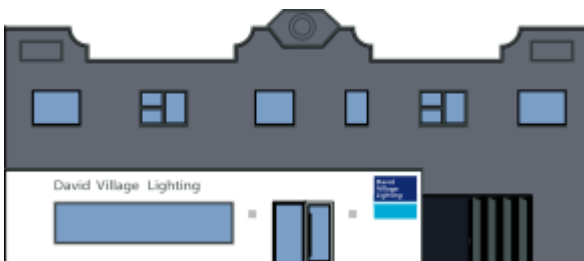
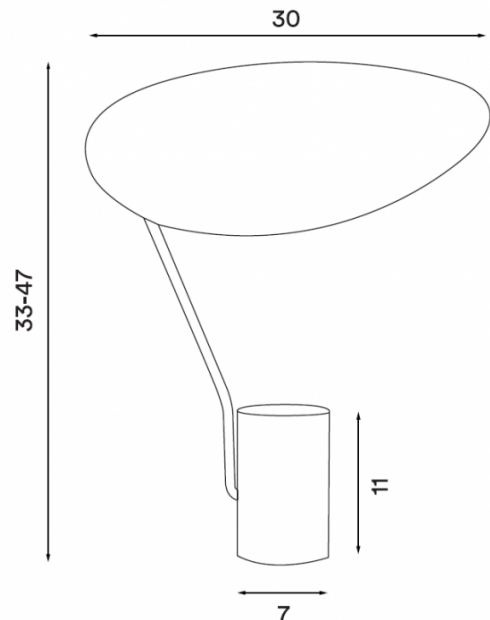
## PRODUCT SPECIFICATION

**Light Source:** 1 x Max 6W LED GU10 (excluded)

**IP Code:** 20

**Dimming:** In line on/off switch included on cable.

**Dimensions:** Width: 30cm  
Height: 33-47cm  
Base: Ø7cm x 11cm  
Cable Length: 200cm



**For all sales and technical enquiries, please contact:**

+44 (0)114 263 4266

[info@davidvillagelighting.co.uk](mailto:info@davidvillagelighting.co.uk)

[www.davidvillagelighting.co.uk](http://www.davidvillagelighting.co.uk)