

MICHAEL ANASTASSIADES

## Michael Anastassiades - Brass Architectural Collection 150

LA5801

SOURCE: <https://www.davidvillagelighting.co.uk/product/Michael-Anastassiades---Brass-Architectural-Collection-150/19701>



### PRODUCT DESCRIPTION

Designer: Michael Anastassiades

### Brass Architectural P150 Pendant Light by Michael Anastassiades

**PLEASE NOTE:** This pendant requires a specified rod length before purchasing. Please [contact us](#) for more information and for placing an order.

Material:

Mouth blown opaline glass

Pendant rod length to order

Also available in Ø6.2 cm and Ø12cm ceiling rose.

Maximum total drop 2161mm with small ceiling rose.

Maximum total drop 2154mm with large ceiling rose

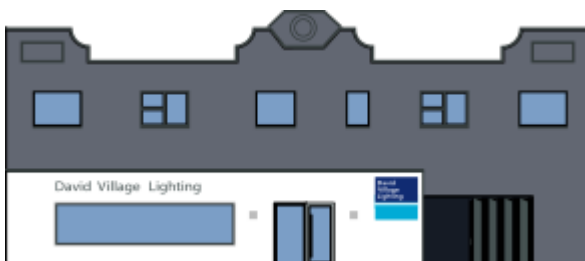
### PRODUCT SPECIFICATION

**Light Source:** 1 x 3.5W LED G9 (included)

**IP Code:** 20

**Dimming:** Dimmable via Triac dimming

**Dimensions:** Ø15 cm  
215cm max drop



For all sales and technical enquiries, please contact:

+44 (0)114 263 4266

[info@davidvillagelighting.co.uk](mailto:info@davidvillagelighting.co.uk)

[www.davidvillagelighting.co.uk](http://www.davidvillagelighting.co.uk)