

Artemide

## Artemide Orsa LED Suspension

LA5628

SOURCE: <https://www.davidvillagelighting.co.uk/product/artemide-orsa-led-suspension/19384>



### PRODUCT DESCRIPTION

**Designer:** Foster + Partners

### Orsa by Artemide

**We currently have limited stock of one of these items in our [Clearance section](#).**

Like a floating disk of light, the Orsa lights have been stripped down to bare essentials. A glass cover makes sure that there is no glare, as the light source remains hidden. The shape of the shade is highlighted even more, as the LED light is diffused through the lens allowing the light be distributed over a wider area. While the Orsa suspension can be used as a single unit, above a dining table, or reception area; multiple suspensions can create an equally impressive effect or even form a chandelier. Orsa is available in two sizes, the smaller Orsa 21 and large Orsa 35.

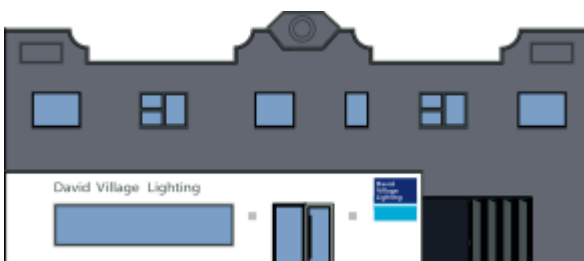
### PRODUCT SPECIFICATION

<b>Light Source:</b>	<b>Orsa 21</b> - 8.5W, 3000K, 562 lumens <b>Orsa 35</b> - 20W, 3000K, 1861 lumens
<b>IP Code:</b>	20
<b>Dimming:</b>	<b>Orsa 21</b> - Non-dimmable <b>Orsa 35</b> - Push to make/ switch dimming, dimmable using push to make switches. Please consult your electrician, additional wiring may be required on site.
<b>Dimensions:</b>	<b>Orsa 21</b> - Ø 21 cm <b>Orsa 35</b> - Ø 34.5 cm  70-170 cm max drop height

Orsa 21



Orsa 35



**For all sales and technical enquiries, please contact:**

+44 (0)114 263 4266

[info@davidvillagelighting.co.uk](mailto:info@davidvillagelighting.co.uk)

[www.davidvillagelighting.co.uk](http://www.davidvillagelighting.co.uk)