

Artemide

Artemide Calipso LED Suspension

LA5627

SOURCE: <https://www.davidvillagelighting.co.uk/product/Artemide-Calipso-LED-Suspension/19381>



PRODUCT DESCRIPTION

Designer: Neil Poulton

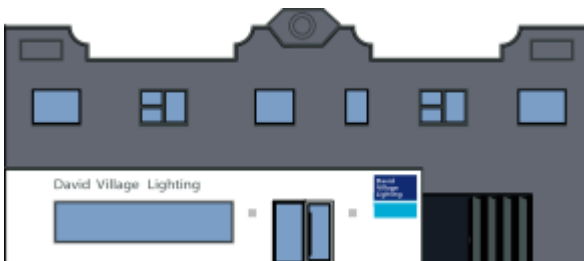
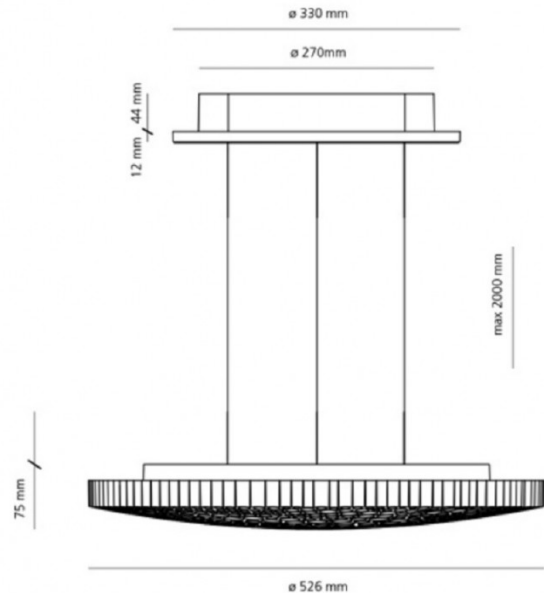
Artemide Calipso Suspension

The iconic honeycomb surfaced Calipso light, a design by Neil Poulton for Artemide. Neil is best known for creating 'deceptively simple-looking mass-produced objects' and has been awarded many design awards. Calipso was created using an image of the moon and a complex algorithm. The large surface is comprised of various, thin tube sections and all together forming an almost perfect circle. Calipso is an ode to nature's irregular geometries, a trued example of aesthetics and optical intelligence.

You can select between a 2700K or 3000K colour temperature. The Calipso is also available in an [App Compatible version](#), controlled via the Artemide App.

PRODUCT SPECIFICATION

- Light Source:** 55W, 2700K, 2884lumens or 55W, 3000K, 2884lumens
- IP Code:** 20
- Dimming:** Push to make/switch dimming, dimmable using push to make switches. Please consult your electrician, additional wiring may be required on site.
- Dimensions:** Ø 52.6 cm
5.6 cm depth
180 cm max cord length
Ø 25 cm ceiling rose



For all sales and technical enquiries, please contact:

+44 (0)114 263 4266

info@davidvillagelighting.co.uk

www.davidvillagelighting.co.uk