

PORTA ROMANA

Porta Romana Neolith Wall Light

LA5611

SOURCE: <https://www.davidvillagelighting.co.uk/product/Porta-Romana-Neolith-Wall-Light/19353>



PRODUCT DESCRIPTION

Porta Romana Neolith Wall Light TWL114.
Conceived by Gareth Devonald Smith. Overlapping smooth sheaths of textured white metal create a subtle diffusion of light. Architectural in character our Neolith Wall Light defines quiet elegance.

Finishes available:
1 Galactic Gold/2 Galactic Silver/3 Stucco White

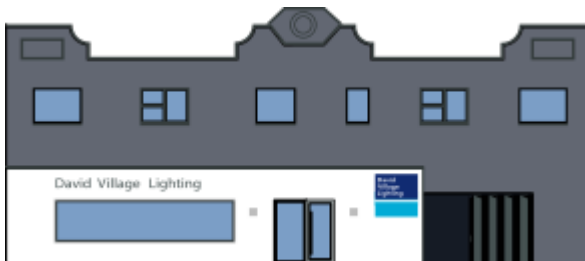
CONSTRUCTED FROM
Forged steel with a decorative finish

PRODUCT SPECIFICATION

Light Source: 1 x 3W LED G9 (excluded)

IP Code: 20

Dimensions: HEIGHT 500mm
WIDTH 120mm
PROJECTION 100mm



For all sales and technical enquiries, please contact:

+44 (0)114 263 4266

info@davidvillagelighting.co.uk

www.davidvillagelighting.co.uk