

FontanaArte

LA5598

Fontana Arte Equatore LED Pendant Light

SOURCE: <https://www.davidvillagelighting.co.uk/product/Fontana-Arte-Equatore-LED-Pendant-Light/19327>



PRODUCT DESCRIPTION

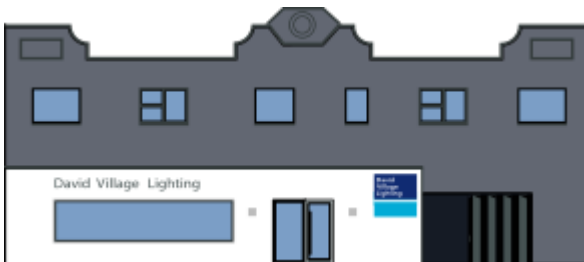
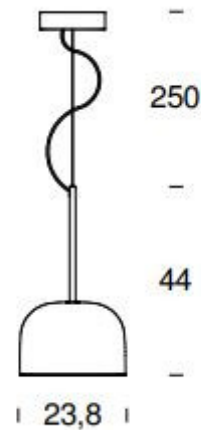
Designer: Gabriele e Oscar Buratti

Fontana Arte Equatore Suspension - Small.

Equatore is a contemporary reinterpretation of the classic lamp with a glass shade. While the traditional abat-jour uses the shade to contain the light source within, in this family of lamps the shade is paradoxically and suggestively empty, with the light being generated by two luminous discs placed inside a central metal band, visible on the shade, that evokes the line of the equator. The light produced by the LEDs, thanks to internal screens arranged in layers, is distributed regularly across the surface of the discs, magically illuminating them. The lower disk directs the light output downward, the upper one illuminates the glass cap for a soft, diffused light. Available in two colors: a cooler version in gray with a dark chrome frame, and a warmer version with a transparent pink cap and a copper-colored frame.

PRODUCT SPECIFICATION

Light Source:	Small: 25W, 2700K, 2900lm Medium: 40W, 2700K, 4500lm Large: 60W, 2700K, 6600lm
IP Code:	20
Dimming:	Dimmable via 1-10v dimming systems. Please consult your electrician, additional wiring may be required on site
Dimensions:	Small: H 44cm W 23.8cm Medium: H 64cm W 35.8cm Large: H 77.3cm W 48cm Cable length: 250cm



For all sales and technical enquiries, please contact:

+44 (0)114 263 4266

info@davidvillagelighting.co.uk

www.davidvillagelighting.co.uk