

**marset**

# Marset High Line LED Floor Lamp

LA5527

SOURCE: <https://www.davidvillagelighting.co.uk/product/Marset-High-Line-LED-Floor-Lamp/19194>



## PRODUCT DESCRIPTION

### Marset High Line LED Floor Lamp

A lighting sculpture of endless style and subtlety. Designer Josep Lluís Xuclà created the High Line floor lamp for Marset in 2018, a beautiful display of volumes, shapes and tones creating not only a dynamic lamp but a piece of art.

The designer Xuclà chose to make a lamp that would produce light indirectly, but instead of using the ceiling as a way of bouncing the light back, he chose the wall. Marset High Line floor lamp features concealed LEDs which reflect light off the wall it is stood next to. This unique lighting design results in a halo effect from around the body of the lamp, thus creating a cosy and atmospheric glow.

This highly stylish floor lamp is perfect for setting the ambience within a living room, study or hallway.

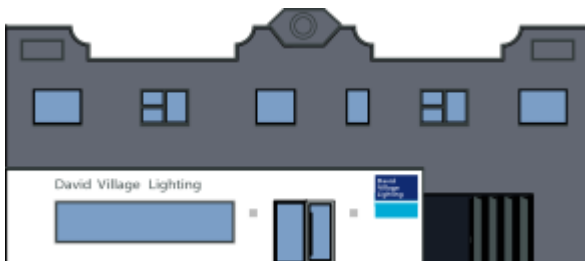
## PRODUCT SPECIFICATION

**Light Source:** 35.4W, 2700K, 2075 Lumens

**IP Code:** 20

**Dimming:** In line dimmer included on cable.

**Dimensions:** Height: 189.5cm  
Depth: 24cm  
Width: 32cm  
Cable Length: 220cm



**For all sales and technical enquiries, please contact:**

+44 (0)114 263 4266

[info@davidvillagelighting.co.uk](mailto:info@davidvillagelighting.co.uk)

[www.davidvillagelighting.co.uk](http://www.davidvillagelighting.co.uk)