



Normann Copenhagen Ikono Pendant

LA5442

SOURCE: <https://www.davidvillagelighting.co.uk/product/Normann-Copenhagen-Ikono-Pendant/19055>



PRODUCT DESCRIPTION

Ikono Pendant Light by Normann Copenhagen

Ikono is a beautiful pendant lamp with a pure and simple feel. The lamp has a cone-shaped glass cylinder and two colored steel shades in matching tones which rest on the glass. Together, these features go to make up a classic pendant lamp. The light is directed by the top shade while the lower shade ensures anti-dazzle.

Cable - 4M in matching colour. White ceiling rose.

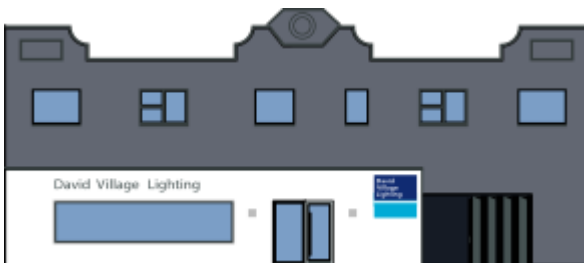
PRODUCT SPECIFICATION

Light Source: 1 x G9 20W max (excluded)

IP Code: 20

Dimming: Dimmable via mains phase dimming

Dimensions: Ø20cm, H 17cm



For all sales and technical enquiries, please contact:

+44 (0)114 263 4266

info@davidvillagelighting.co.uk

www.davidvillagelighting.co.uk