

VIBIA

Vibia Palma 3700 LED Wall Light

LA5400

SOURCE: <https://www.davidvillagelighting.co.uk/product/Vibia-Palma-3700-LED-Wall-Light/18955>

PRODUCT DESCRIPTION

Designer: Antoni Arola

Palma 3700 LED Wall Light by Vibia

The Palma 3700 LED Wall Light is a simple yet elegant fixture, designed by Antoni Arola as part of the [Vibia Palma collection](#). The wall light features a slimline metal structure that holds a stunning blown glass lampshade. The shade diffuses the integrated LED light source, providing effective and useful illumination.

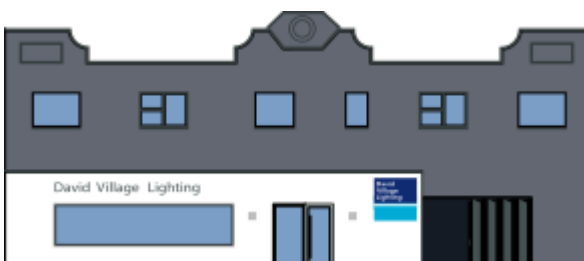
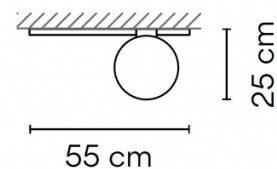
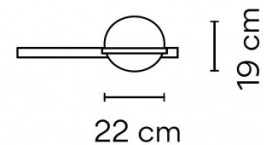
The Palma 3700 Wall Light can be used in homes, offices, hospitality venues and commercial settings thanks to its unimposing aesthetic and efficient glow. The wall lamp is available in two neutral finishes; a graphite or white colour, and can be used alone or in multiple depending on your needs.

This Vibia Wall Light can also be supplied with a [plant pot addition](#).



PRODUCT SPECIFICATION

- Light Source:** 9.2W, 2700K, 868 Lumens
- IP Code:** 20
- Dimming:** Dimmable via push to make/1-10v dimming systems. Please consult your electrician, additional wiring may be required on site.
- Dimensions:** Shade: Ø22cm
Shade Height: 19cm
Length: 55cm
Depth: 25cm



For all sales and technical enquiries, please contact:

+44 (0)114 263 4266

info@davidvillagelighting.co.uk

www.davidvillagelighting.co.uk