

case

Case Core Single Suspension

LA5337

SOURCE: <https://www.davidvillagelighting.co.uk/product/Case-Core-Single-Suspension/18839>



PRODUCT DESCRIPTION

Case Core Single Suspension.

A simple but striking pendant, crafted from solid Italian fine-grained Carrara marble. A subtle diffused glow is produced around the lower section when lit. As marble is a natural material the hue and veining will vary from piece to piece, making each shade body unique.

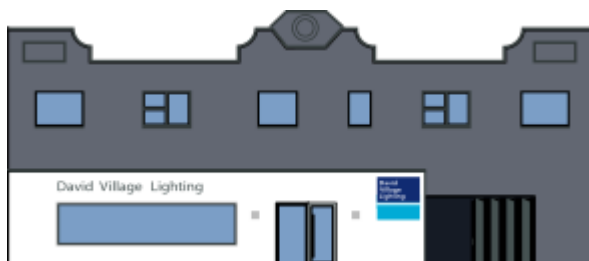
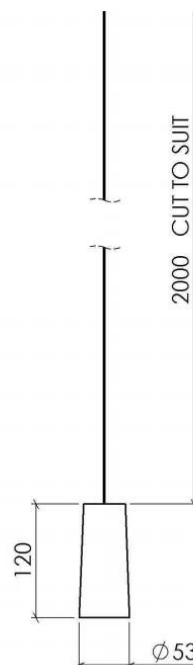
Conical steel ceiling rose fixing, powder-coated in white (RAL 9003). Ceiling rose Ø 88mm, H 86mm. All fixings are hidden within the ceiling rose.

Included: 2 metre matt white cable (Ø 4.5mm, 2 x 0.82) Conical steel ceiling fixing.

Material:
Fine-grained Carrara marble

PRODUCT SPECIFICATION

- Light Source:** 1x 3W G9 LED lamp excluded
- IP Code:** 20
- Dimming:** Dimmable via mains phase dimming
- Dimensions:** Ø 52mm
H 120mm
Supplied with 2 metre matt white cable (Ø 4.5mm, 2 x 0.82)



For all sales and technical enquiries, please contact:

+44 (0)114 263 4266

info@davidvillagelighting.co.uk

www.davidvillagelighting.co.uk