



# Oluce Alba Pendant

LA5282/S

SOURCE: <https://www.davidvillagelighting.co.uk/product/Oluce-Alba-Pendant/18717>



## PRODUCT DESCRIPTION

**Designer:** Mariana Pellegrino Soto

### Oluce Alba Pendant

Oluce Alba Pendant was designed by Mariana Pellegrino Soto. The concept and inspiration for the Alba Pendant was a single drop of water. Thoughtfully designed, the soft shapes contrast with the square lines referencing the nature of the world. Add a sophisticated element to any décor with this timeless opal-coloured shade that creates a diffused subtle cast. Soto designed this pendant with classical materials, such as anodic bronze metal and opaline glass.

Alba pendant can be hung from a 280cm barely visible cable in multiples for a cluster effect on a stairway or above a kitchen island. Soto designed the Alba pendant as a [Oluce Alba Double Pendant](#) which also create a cluster effect when hung together.

## PRODUCT SPECIFICATION

**Light Source:** 1X Max 75W, E27 (excluded)

**IP Code:** 20

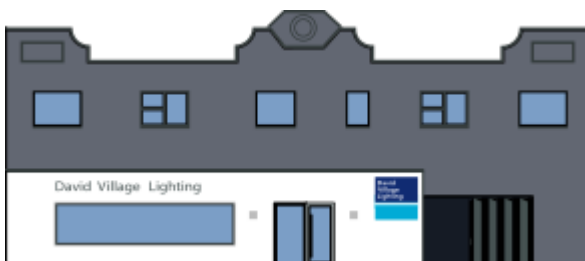
**Dimming:** Dimmable via mains phase dimming

**Dimensions:** Cable length: 280cm  
Diameter: Ø 32cm  
Height: 22cm

22 CM



Ø 32cm



**For all sales and technical enquiries, please contact:**

+44 (0)114 263 4266

[info@davidvillagelighting.co.uk](mailto:info@davidvillagelighting.co.uk)

[www.davidvillagelighting.co.uk](http://www.davidvillagelighting.co.uk)