

m o o o i

# Moooi Meshmatics LED Chandelier

LA5246

SOURCE: <https://www.davidvillagelighting.co.uk/product/Moooi-Meshmatics-LED-Chandelier/18702>

## PRODUCT DESCRIPTION

**Designer:** Rick Tegelaar

### Moooi Meshmatics Chandelier

Rick Tegelaar designed the Meshmatics after spending most of his student years developing a process to manipulate chicken wire. He created his own tools in order to mould the wire into different shapes. The Meshmatics was one of the first designs he designed and produced after graduating, until Moooi took over the production. Tegelaar actually had to spend some time with the Production Team to adapt his process into a more industrial solution.

The Meshmatics, available in two sizes, is a lightweight and transparent chandelier; it doesn't become a visual block in the room. The light gushes through the wire frame, and creates a reflective game of shadows onto the ceiling. The chandelier is actually formed with three overlaying dome shaped structures, of different heights and diameters. The LED source is ingeniously hidden inside the golden cap at the base of the light. The wire mesh functions as a reflector for the light, leading to varying transparencies caused from the different wire layers.

Meshmatics becomes a floating and lightweight source of light, creating a radiant atmosphere in any interior. The form and glow of the light, along with its minute and discreet brass details, make the Meshmatics chandeliers an elegant and stimulating designer light for residential and commercial environments.

**Please note, 10-meter cable can be purchased separately where needed. Please [contact us](#) for more information.**



## PRODUCT SPECIFICATION

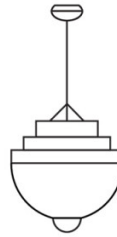
**Light Source:** 12W, 2700K, 665 Lumens  
**IP Code:** 20  
**Dimming:** Dimmable using trailing edge. Alternatively Dimmable via 1-10V dimming systems. For 1-10V dimming, please consult your electrician, additional wiring may be required on site.

**Dimensions: Small**  
Ø58cm  
Height: 58cm

**Large**  
Ø90cm  
Height: 90cm

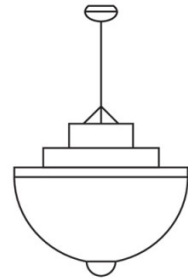
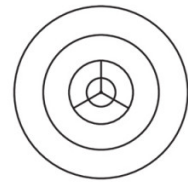
Cable Length: 250cm

58cm | 22.8"



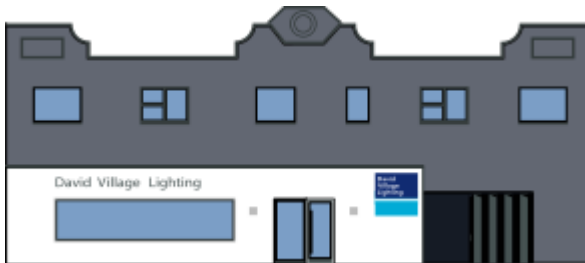
58cm | 22.8"

90cm | 35.4"



90cm | 35.4"

90cm | 35.4"



**For all sales and technical enquiries, please contact:**

+44 (0)114 263 4266

[info@davidvillagelighting.co.uk](mailto:info@davidvillagelighting.co.uk)

[www.davidvillagelighting.co.uk](http://www.davidvillagelighting.co.uk)