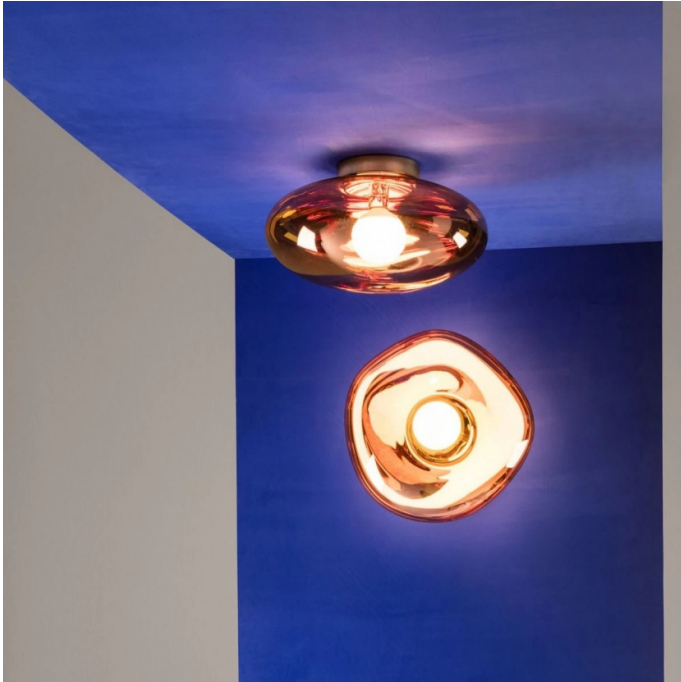




Tom Dixon Melt Surface Light

LA5238

SOURCE: <https://www.davidvillagelighting.co.uk/product/Tom-Dixon-Melt-Surface-Light/18690>



PRODUCT DESCRIPTION

Designer: Tom Dixon

Tom Dixon Melt Surface Light

We currently have limited stock of one of these items in our [Clearance section](#).

Squashed, squeezed, distorted and moulded into a flatter blob, Melt's extraordinary luminosity has found new applications on wall, ceiling or floor. With its instantly recognisable metallised effect, this latest evolution of Melt is now destined to be mounted on any surface. The versatility of the shade is further enhanced by the soft glow of a new bulb. Truly there is now a Tom Dixon Melt for every occasion.

The Tom Dixon [Melt Collection](#) also includes pendants in two sizes, multiple canopy options, a floor lamp and wall lights.

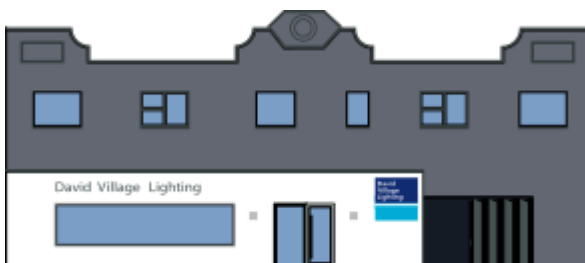
PRODUCT SPECIFICATION

Light Source: 1 x E27 28W max (excluded)

IP Code: 44

Dimming: Dimmable via mains phase dimming

Dimensions: 50cm width
50cm height
28cm depth



For all sales and technical enquiries, please contact:

+44 (0)114 263 4266

info@davidvillagelighting.co.uk

www.davidvillagelighting.co.uk