



Tom Dixon Stone LED Pendant

LA5203/LED

SOURCE: <https://www.davidvillagelighting.co.uk/product/Tom-Dixon-Stone-LED-Pendant/18648>



PRODUCT DESCRIPTION

Designer: Tom Dixon

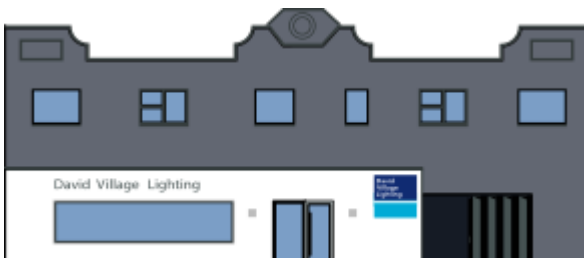
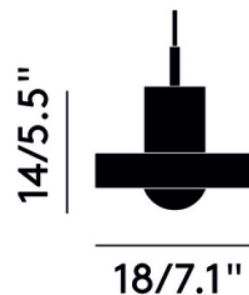
Stone LED Pendant Light by Tom Dixon

The Stone LED pendant is an elegant and refined light, designed by the Tom Dixon lighting brand. Made from marble, this pendant lamp harkens back to classical architecture as marble has been used for centuries in design and sculpting. The pendant lamp also features a chic round brass fixture which helps to diffuse the integrated LED light source.

The Stone pendant lamp emits a gorgeous ring of light which spreads out and casts playful shadows on its surroundings. Suitable for many settings, the pendant can be used alone in smaller spaces or in rows and clusters in larger spaces. You can also match with other lights from the [Tom Dixon Stone collection](#) for a consistent light scheme throughout your interior.

PRODUCT SPECIFICATION

Light Source: 6W, 3000K, 360 Lumens
IP Code: 20
Dimming: Dimmable via mains phase dimming.
Dimensions: Ø18cm
 Height: 14cm
 Cable Length: 250cm



For all sales and technical enquiries, please contact:

+44 (0)114 263 4266

info@davidvillagelighting.co.uk

www.davidvillagelighting.co.uk