



Slamp Etoile LED Ceiling / Wall

LA5111

SOURCE: <https://www.davidvillagelighting.co.uk/product/Slamp-Etoile-LED-Ceiling-Wall/18516>

PRODUCT DESCRIPTION

Designer: Adriano Rachele

Slamp Etoile Ceiling / Wall Light

Etoile's name was inspired by the world of classical dance, the weightlessness and elegance are due to the materials that spread the light throughout the product and into your space. Designed by Adriano Rachele, this surface light has a modern yet elegant design and is curated from Slamp's own patented Lentiflex® material.

The Etoile hovers lightly in the air with sublime elegance like a dancing star, a perfect balance of asymmetrical forms. The Etoile has an innovative magnetic attachment that allows you to easily detach and remove the diffuser for simple maintenance and replacement operations. Etoile Ceiling/Wall Lamp is a great way to illuminate your space, whether in your home or a professional setting like restaurants and bars. It is certainly made to be the star and icon of any room and steal the show every time.



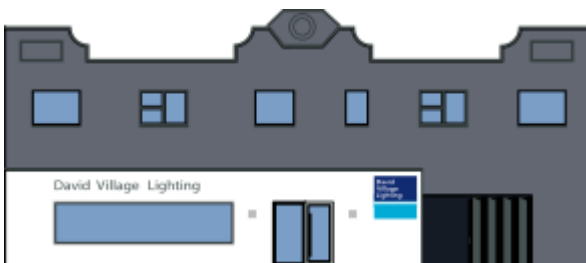
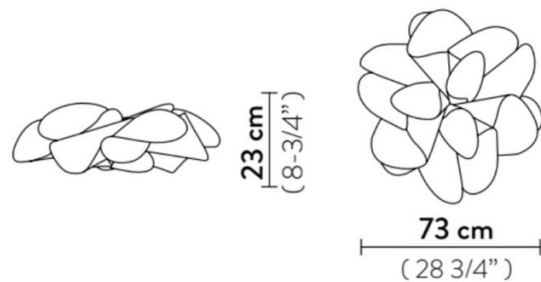
PRODUCT SPECIFICATION

Light Source: 15W, 2700K, 2150 Lumens

IP Code: 20

Dimming: Non-Dimmable.

Dimensions: Ø73cm
Height: 23cm



For all sales and technical enquiries, please contact:

+44 (0)114 263 4266

info@davidvillagelighting.co.uk

www.davidvillagelighting.co.uk