



# Slamp Charlotte Half Suspension

LA5104

SOURCE: <https://www.davidvillagelighting.co.uk/product/Slamp-Charlotte-Half-Suspension/18507>



## PRODUCT DESCRIPTION

**Designer:** Doriana & Massimiliano Fuksas

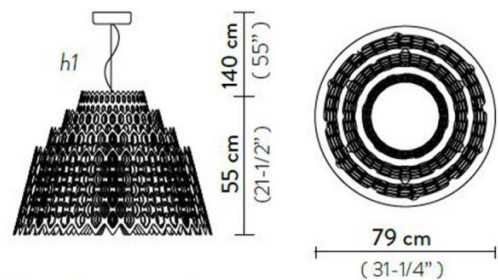
### Slamp Charlotte Half Suspension

Charlotte was created from a world of illusion, from the challenge of turning a two-dimensional element infinitely multiplying shapes. The light resembles that of waves pulling away from the shore, leaving little-illuminated drops behind. The hexagonal openings throughout the shade allow the light to fall into the room and be intensified by the pattern. This emphasises the light emitted and reflects the concentric design.

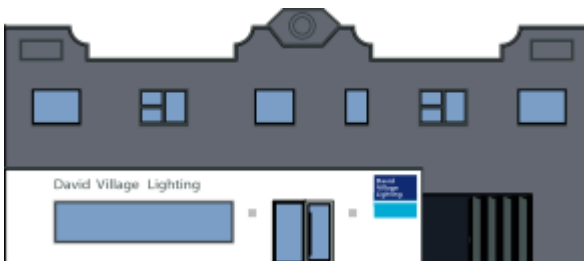
The Slamp Charlotte Half Suspension is a modern and elegant design, curated by Doriana and Massimiliano Fuksas. The shade is composed of layers of white Cristalflex®, a plastic based material patented by Slamp, with concentric hexagonal openings. Charlotte Half Suspension is a handmade product that is manufactured according to Slamp's high standards of quality.

## PRODUCT SPECIFICATION

- Light Source:** 70W, 2700K, 7000 Lumens
- IP Code:** 20
- Dimming:** Dimmable via Triac dimming.
- Dimensions:** Ø79cm  
Height: 55cm



h1: maximum cable length



**For all sales and technical enquiries, please contact:**

+44 (0)114 263 4266

info@davidvillagelighting.co.uk

www.davidvillagelighting.co.uk