



# ferm LIVING Collect Pendant - Dome

LA5088

SOURCE: <https://www.davidvillagelighting.co.uk/product/ferm-LIVING-Collect-Pendant---Dome/18465>



## PRODUCT DESCRIPTION

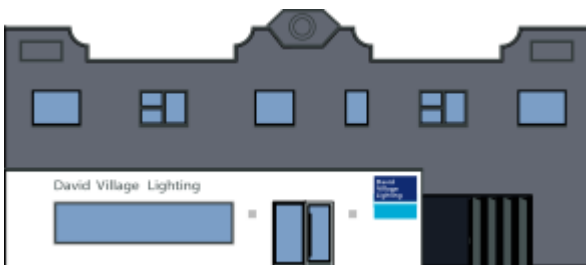
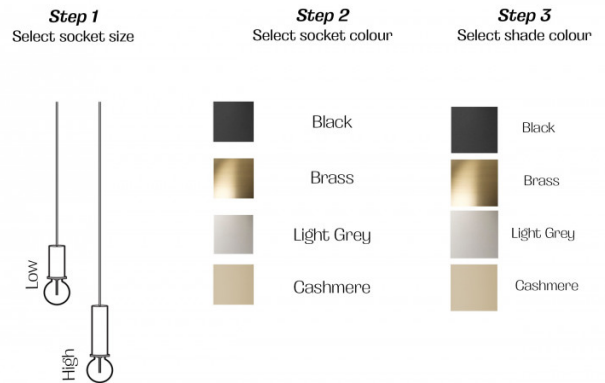
### ferm LIVING Collect Pendant - Dome

With a seemingly infinite range of expressions, ferm LIVING's innovative and interchangeable lighting system allows you to create customised and contemporary looks in each and every room. Offered in a fully compatible series of multiple shapes and colours, COLLECT Lighting gives you the freedom to create beautiful lighting solutions. Simply select your chosen lampshade and pair with the series' decorative brass ring and one of two socket pendants.

The socket pendant comes complete with a decorative brass ring, dusty blue ceiling cup and a fabric cord of 3 meter.

## PRODUCT SPECIFICATION

- Light Source:** 1 x max 25W E27 (excluded)  
OR  
1 x max 13W LED E27 (excluded)
- IP Code:** 20
- Dimming:** Dimmable via mains phase dimming.
- Dimensions:** Low socket - H 10.2 x W 6 x D 6 cm  
High socket - H 17 x W 6 x D 6 cm  
Dome Shade: Ø 38 x H 16 cm



**For all sales and technical enquiries, please contact:**

+44 (0)114 263 4266

[info@davidvillagelighting.co.uk](mailto:info@davidvillagelighting.co.uk)

[www.davidvillagelighting.co.uk](http://www.davidvillagelighting.co.uk)