

marset

Marset Pu-erh LED Suspension

LA5074

SOURCE: <https://www.davidvillagelighting.co.uk/product/Marset-Pu-erh-LED-Suspension/18438>



PRODUCT DESCRIPTION

Marset Pu-erh Suspension

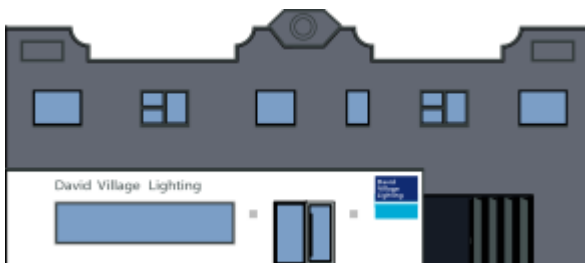
The distinction of the new Pu-erh collection lies in its use of ceramics as material to yield a lamp with a delicate, fabric-like effect. Designer and ceramist Xavier Mañosa has created a texture, evoking pleated silk, which is then applied to a conical shade, casting a wide and beautiful ray of illumination. The Pu-erh begins with a rough sketch, drawn by the hand of its designer. This sketch, with all its ridges and grooves, was applied directly to the ceramic mould, yielding a lamp whose irregular variations supply a raw, natural effect. This underlies the collection's most essential aspect: the simplicity of its artisanal process. The craftsman barely intervenes, letting the lamp take shape naturally within the mould. Pu-erh is arresting in its simplicity and innovative in the transparency of its process. This new collection of suspension lamps is available in three sizes—21, 32, and 42cm—and a wide range of muted colours that allow one to appreciate the texture of the ceramic: black, white, blue, burgundy and pink. Dancing off the beautifully rippled underside of the shade, Pu-erh's light is warm, pleasant, and playful.

PRODUCT SPECIFICATION

Light 6w, 500lumens, 2700k

Source:

Dimming: Dimmable via Phase cut, leading and trailing edge (Triac) dimming systems



For all sales and technical enquiries, please contact:

+44 (0)114 263 4266

info@davidvillagelighting.co.uk

www.davidvillagelighting.co.uk