

FOSCARINI

Foscarini Satelight Pendant

LA5010/S

SOURCE: <https://www.davidvillagelighting.co.uk/product/Foscarini-Satelight-Pendant/18336>



PRODUCT DESCRIPTION

Designer: Eugeni Quitllet

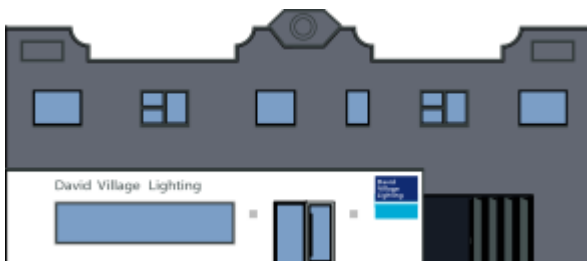
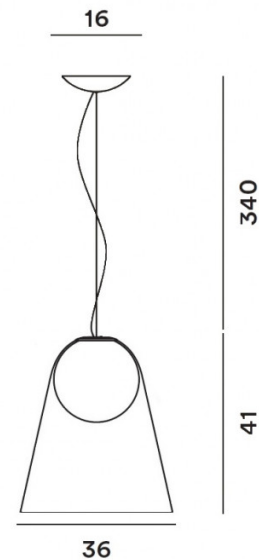
Satelight Pendant Light by Foscarini

The Satelight pendant light was designed by Eugeni Quitllet in 2017 and is one of Foscarini's best selling lights. The shade is made from two glass elements, a simple, transparent cone which holds a gorgeous white ball that encases the light source. It gives the illusion of a ball being held and suspended in the air, being an elegant and beautiful aesthetic that will catch the eye in any room.

The Satelight pendant emits a soft, warm glow that spreads throughout the room, lighting up the space in a natural and wondrous way. The pendant is suitable for many different types of interiors in both commercial and domestic settings and can be used alone or in clusters and rows to create the effect you want in the space. Do not miss out on this stunning light and match with others from the [Foscarini Satelight collection](#).

PRODUCT SPECIFICATION

- Light Source:** 1 x E27 LED 21W, 2700K, 2500 lumens (included by Foscarini)
- IP Code:** 20
- Dimming:** Dimmable via Triac dimming
- Dimensions:** 36 cm width
41 cm shade height



For all sales and technical enquiries, please contact:

+44 (0)114 263 4266

info@davidvillagelighting.co.uk

www.davidvillagelighting.co.uk