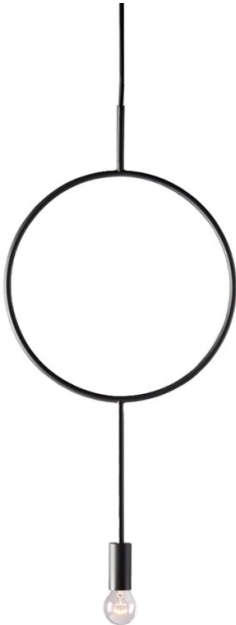


# Northern Northern Circle Pendant

LA4913

SOURCE: <https://www.davidvillagelighting.co.uk/product/Northern-Circle-Pendant/18200>



## PRODUCT DESCRIPTION

**Designer:** Hannakaisa Pekkala

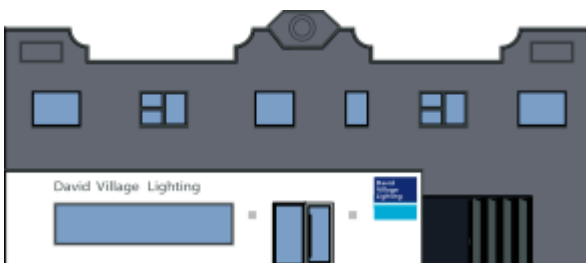
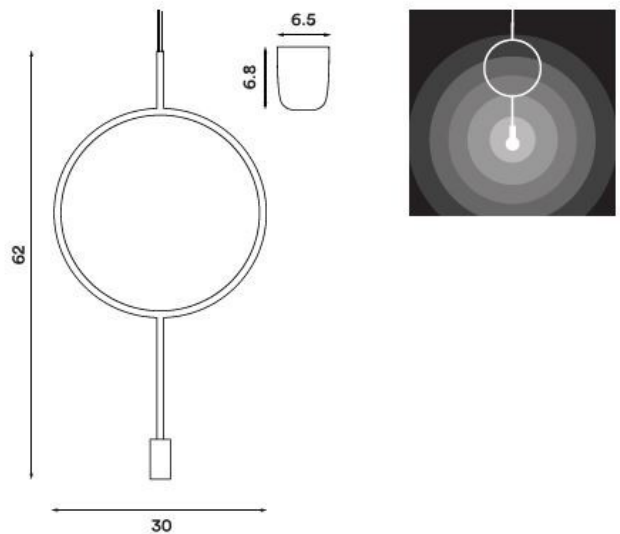
### Northern Circle Pendant

The Circle Pendant was designed by Hannakaisa Pekkala for Northern. Pekkala breaks away from tradition with this pendant, disregarding designs for classic chandeliers in favour of the contemporary. The geometric lines create a minimalist structure that is as artistic as it is functional. The simplicity of the structure is a contradiction of the complexity of this design. Each detail required careful forethought so that the final result would appear seamless and uncluttered from any unnecessary additions or details.

A single bulb hangs from the bottom of the Circle Pendant, offering a bright glow that evenly illuminates the space around it. When lit, it creates an atmospheric light that is perfect for living rooms or other communal spaces within the home. It is also suitable for commercial spaces such as contemporary bars and restaurants. Display individually or combine with several others to create unique compositions.

## PRODUCT SPECIFICATION

- Light Source:** 1 x Max 40W E14 (excluded)
- IP Code:** 20
- Dimming:** Dimmable via mains phase dimming.
- Dimensions:** Height: 62cm  
Width: 30cm  
Ceiling Rose: 6.5cm x 6.8cm  
Cable Length: 370cm



**For all sales and technical enquiries, please contact:**

+44 (0)114 263 4266

info@davidvillagelighting.co.uk

www.davidvillagelighting.co.uk