

ANGLEPOISE®

# Anglepoise Original 1227 Mini Ceramic Pendant

LA4799

SOURCE: <https://www.davidvillagelighting.co.uk/product/Anglepoise-Original-1227-Mini-Ceramic-Pendant/17985>



## PRODUCT DESCRIPTION

Designer: George Carwardine

### Original 1227 Mini Ceramic Pendant Light by Anglepoise

The smaller, ceramic version of the [Anglepoise Original 1227 pendant](#), the Original 1227 Mini Ceramic pendant light is a more elegant and compact light, getting its shade shape from the classic 1935 Anglepoise lamp design.

Emanating a pleasant glow, the shade is made from bone china, turning translucent when switched on to provide a chic and timeless pendant. Suitable in both commercial and home environments, the 1227 Mini Ceramic pendant looks best as a singular light above a small table or lined with multiple to create a lovely light display in dining or kitchen areas. To create a real impact, match with other lights from the [Anglepoise Mini Ceramic collection](#) to make your room have a sophisticated touch.

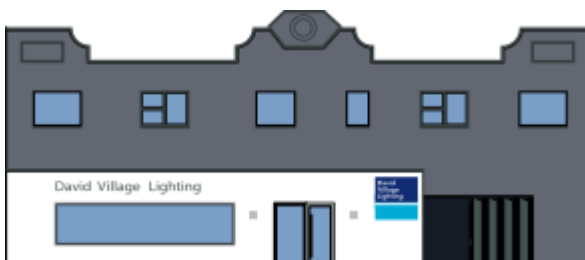
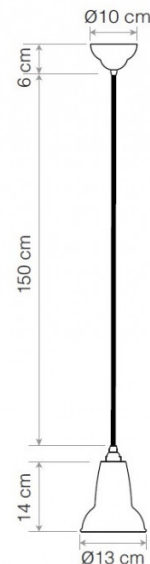
## PRODUCT SPECIFICATION

**Light Source:** 1 x max 15W E14 (excluded)

**IP Code:** 20

**Dimming:** Dimmable via mains phase dimming

**Dimensions:** Ø13cm shade  
14cm shade height  
Ø10cm ceiling rose  
150cm cable length



For all sales and technical enquiries, please contact:

+44 (0)114 263 4266

[info@davidvillagelighting.co.uk](mailto:info@davidvillagelighting.co.uk)

[www.davidvillagelighting.co.uk](http://www.davidvillagelighting.co.uk)