

# LE KLINT **Le Klint 351 Floor Lamp**

**LA4725/351**

SOURCE: <https://www.davidvillagelighting.co.uk/product/Le-Klint-351-Floor-Lamp/17866>



## PRODUCT DESCRIPTION

**Designer:** Aage Petersen

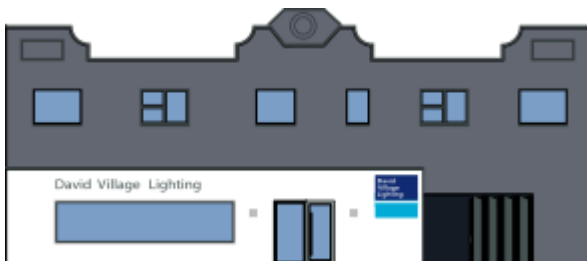
### 351 Floor Lamp by Le Klint

The 351 floor lamp was first designed in 1970 by Aage Petersen for Le Klint. With a tall triangular pleated shade and a brass base and stand, the 351 floor light looks timeless and chic. Like many Le Klint lampshades, this lamp is available in either a plastic foil or paper material, completely hand-crafted by the workers at their Pleating Studio in Denmark.

The stand has an adjustable height which starts at 121 cm which can be extended up to 170 cm, making this light practical as well as elegant. You can utilise your space very well with this adjustable floor lamp and can create a nice atmosphere due to its soft, diffused light. Suitable for both domestic and office areas, match the 351 floor lamp with the [352 table lamp](#) to create complete consistency in your décor.

## PRODUCT SPECIFICATION

- Light Source:** 1 x E27 60W max (excluded)
- IP Code:** 20
- Dimming:** Integrated on/off switch on the product
- Dimensions:** Ø55cm shade  
121-170cm height



**For all sales and technical enquiries, please contact:**

+44 (0)114 263 4266

[info@davidvillagelighting.co.uk](mailto:info@davidvillagelighting.co.uk)

[www.davidvillagelighting.co.uk](http://www.davidvillagelighting.co.uk)