

LE KLINT

Le Klint 306 Table/Wall Light

LA4722

SOURCE: <https://www.davidvillagelighting.co.uk/product/Le-Klint-306-TableWall-Light/17853>



PRODUCT DESCRIPTION

Designer: Kaare Klint

Model 306 by Le Klint

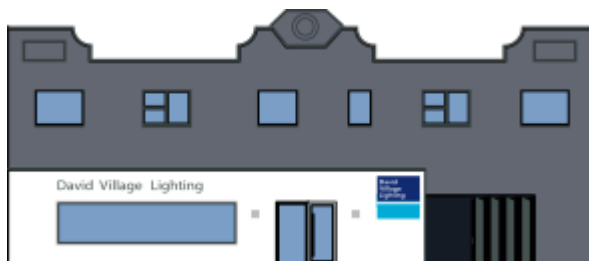
A versatile, multi-use lamp that was designed by Kaare Klint back in 1945. The Le Klint 306 lamp can be used both as a table lamp or a wall light and can be converted depending on how you wish to use it.

PRODUCT SPECIFICATION

Light Source: 1 x E27 40W max (excluded)

IP Code: 20

Dimensions: Ø35cm shade
41cm height



For all sales and technical enquiries, please contact:

+44 (0)114 263 4266

info@davidvillagelighting.co.uk

www.davidvillagelighting.co.uk