

LE KLINT **Le Klint 107 Pendant**

LA4717

SOURCE: <https://www.davidvillagelighting.co.uk/product/Le-Klint-107-Pendant/17834>



PRODUCT DESCRIPTION

Designer: Esben Klint

Model 107 by Le Klint

The 107 pendant was created long before the Le Klint company was founded. The design belongs to Esben Klint, son of Kaare Klint, and it was part of the company's logo for a long time. The Le Klint 107 is still part of the brand's collection and has become a favourite. The closed form of the 107 light makes it ideal for high ceilings, with a concealed light source and no glare. You can choose the lampshade material and select either paper or plastic.

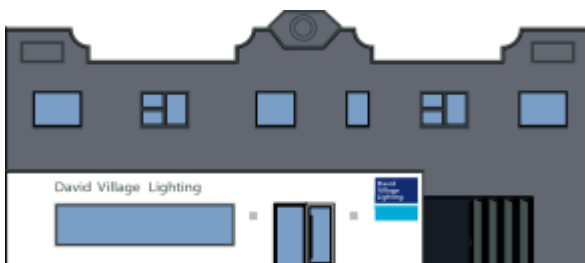
PRODUCT SPECIFICATION

Light Source: 1 x E27 40W max (excluded)

IP Code: 20

Dimming: Dimmable via mains phase dimming

Dimensions: Ø27cm
22cm height
3m cable length



For all sales and technical enquiries, please contact:

+44 (0)114 263 4266

info@davidvillagelighting.co.uk

www.davidvillagelighting.co.uk