

# LE KLINT Le Klint 101 XL Pendant

LA4715/XL

SOURCE: <https://www.davidvillagelighting.co.uk/product/Le-Klint-101-XL-Pendant/17828>



## PRODUCT DESCRIPTION

Designer: Kaare Klint

### Le Klint 101 XL Pendant

Based on Kaare Klint's original design of The Lantern, Kim Weckstrom Jensen redesigned the lamp into an extra large version. The new Lantern has a brush steel fitting in different finish options. A large pleated pendant that is Kim's tribute to Kaare Klint. The 101 XL pendant is ideal for high ceilings, or above a dining table or just as a feature piece in the room.

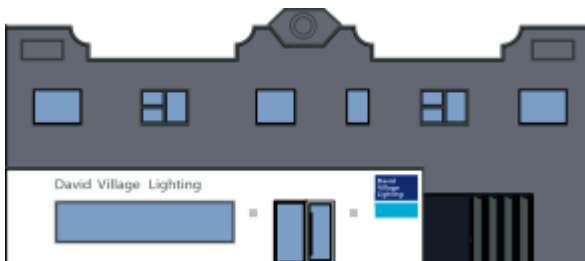
## PRODUCT SPECIFICATION

**Light Source:** 1 x E27 60W max (excluded)

**IP Code:** 20

**Dimming:** Dimmable via mains phase dimming

**Dimensions:** Ø55cm  
70cm height  
3m cable length



For all sales and technical enquiries, please contact:

+44 (0)114 263 4266

info@davidvillagelighting.co.uk

www.davidvillagelighting.co.uk