

# LE KLINT

## Le Klint Swirl 3 Pendant Light

LA4707/3LC

SOURCE: <https://www.davidvillagelighting.co.uk/product/Le-Klint-Swirl-3-Pendant-Light/17795>



### PRODUCT DESCRIPTION

**Designer:** Øivind Slaatto

Part of the [Le Klint Swirl collection](#) by designer Øivind Slaatto, the Swirl 3 light is based on Slaatto's fascination with a snail's shell and the concept of fractals, a mathematical phenomenon that is based on one-dimensional patterns.

The Swirl 3 pendant is distinguished by its circling, spiralling lines and spherical shape, resulting in a graceful and captivating light. Emitting a warm glow, this light is very versatile and can be used in many spaces in both home and commercial interiors. This pendant works best hanging low alone or as part of a cluster of Swirl pendant lights. Choose if you want to mix and match colours and sizes of the Swirl 3, or match the light with other pendants from the Swirl collection to achieve a magnificent light feature.

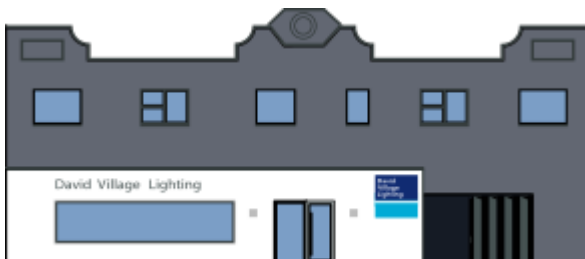
### PRODUCT SPECIFICATION

**Light Source:** S - 1 x E14 25W max (excluded)  
M - 1 x E27 40W max (excluded)  
L - 1 x E27 75W max (excluded)

**IP Code:** 20

**Dimming:** Dimmable via mains phase dimming

**Dimensions:** S - Ø32cm, H 30cm  
M - Ø40cm, H 35cm  
L - Ø65cm, H 60cm



**For all sales and technical enquiries, please contact:**

+44 (0)114 263 4266

info@davidvillagelighting.co.uk

www.davidvillagelighting.co.uk