

LE KLINT

Le Klint Cache 155 Pendant

LA4703

SOURCE: <https://www.davidvillagelighting.co.uk/product/Le-Klint-Cache-155-Pendant/17756>



PRODUCT DESCRIPTION

Designer: Aurélien Barbry

Cache Pendant Light by Le Klint

The Caché pendant light is part of the [Le Klint Caché collection](#), a range designed for the brand by Aurélien Barbry. Meaning hidden in French, the word Caché is used to represent the hidden hand-pleated diffuser that is tucked in the bottom of the beautiful bell-like lampshade. Creating a pendant that is elegant and sophisticated the light makes perfect use of Le Klint's signature hand-folded lamp design in a contemporary way.

Available in two sizes, the Le Klint Cache Pendant casts a warm, downward glow, this pendant light will work perfectly as a spotlight over a table in either a dining or lounge area and will easily fit into any design scheme due to the subtle black colour finish.

PRODUCT SPECIFICATION

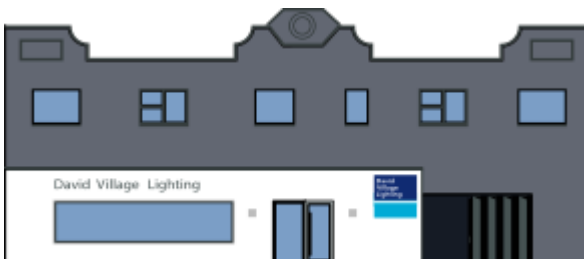
Light Source: 1 x Max 25W E27 (excluded)

IP Code: 20

Dimming: Dimmable via mains phase dimming.

Dimensions: Small:
 Ø20cm
 Height: 21cm
 Cable Length: 300cm

Medium:
 Ø30cm
 Height: 32cm
 Cable Length: 300cm



For all sales and technical enquiries, please contact:

+44 (0)114 263 4266

info@davidvillagelighting.co.uk

www.davidvillagelighting.co.uk