

**louis poulsen**

# Louis Poulsen PH 3½-2½ Glass Table Lamp

**LA4681**

SOURCE: <https://www.davidvillagelighting.co.uk/product/Louis-Poulsen-PH-3-2-Glass-Table-Lamp/17724>

## PRODUCT DESCRIPTION

**Designer:** Poul Henningsen

### PH 3½-2½ Glass Table Lamp by Louis Poulsen

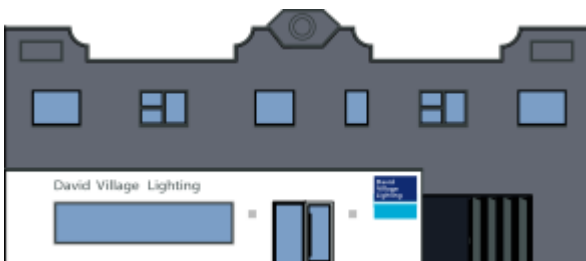
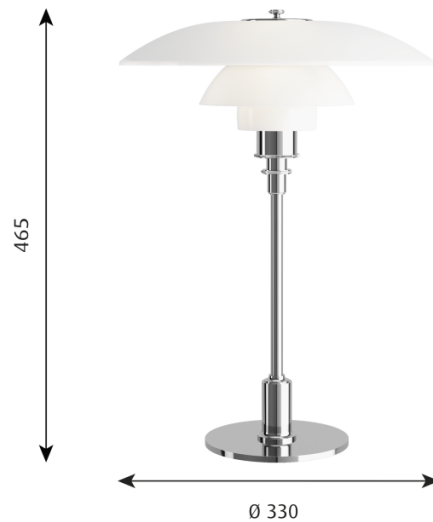
The PH 3½-2½ Glass table lamp was first designed in 1928 by Poul Henningsen, using his iconic 3 layered glass lampshade and a beautiful brass body. Henningsen strove to produce a lamp that would optimise and diffuse the light source and so created a design that was based on a logarithmic spiral. The now renowned lampshade has been used for countless lights produced by Henningsen and Louis Poulsen.

The PH 3½-2½ Glass table light is available in 3 lovely finishes, brass, black or chrome, being a chic addition to any space. This table lamp is perfect for many settings whether you want a cosy light in your lounge or an effective, inviting light for your office. The vintage design means it will catch the eye in any room and its timeless silhouette means it will never go out of style.



## PRODUCT SPECIFICATION

- Light Source:** 1 x Max 6W E14 LED (excluded)
- IP Code:** 20
- Dimming:** In line on/off switch included on cable.
- Dimensions:** Ø33cm  
Height: 46.5cm



**For all sales and technical enquiries, please contact:**

+44 (0)114 263 4266

info@davidvillagelighting.co.uk

www.davidvillagelighting.co.uk