

m o o o i

LA4660

Moooi Coppelia Suspended LED Chandelier

SOURCE: <https://www.davidvillagelighting.co.uk/product/Moooi-Coppelia-Suspended-LED-Chandelier/17700>

PRODUCT DESCRIPTION

Designer: Arihiro Miyake

Coppelia by Moooi

Coppélia derives from the Greek word ?????? which means young woman, the name of the famous ballet by Arthur Saint-Leon in which Dr Coppelius created a life-sized ballerina doll. The Coppelia Suspended Lamp was designed by Arihiro Miyake for the Danish brand, Moooi. Miyake's modern take to the traditional chandelier, produces this geometrical and perfectly balanced suspension light. Imitating the mechanical body of the ballerina's graceful movements on stage.

The chandelier is available in two sizes, the larger Coppelia with a 101 cm diameter and Coppelia Small with a 68 cm diameter. The three-tier light features 54 or 36 light sources, with polycarbonate shades that resemble candles found in the very first chandeliers. The body of the light is formed by cross wired stainless steel that supports its three dimensional presence, available in black satin or stainless steel finish. When lit, the Coppelia will flood any room as well as the spectator with light and becomes a centre piece for any room. The chandelier can be hang in a high ceiling reception or vestibule, low above a meeting or dining table. The lights are suitable for any interior, both modern and traditional, as the Coppelia Chandeliers bring a magical glow into the any space.

Install a single Coppelia Suspended Lamp into your home or business, or choose to create your own lighting arrangement, instantly boosting the room's aesthetics. Additionally, you can explore [Arihiro Miyake's](#) lighting designs and carry on the unique aesthetics into other rooms of your home or office space.



PRODUCT SPECIFICATION

Light Source: **Coppelia Small** - 20W, 2700K, 400 Lumens
Coppelia - 33W, 2700K, 600 Lumens

IP Code: 20

Dimming: Dimmable using trailing edge. Alternatively dimmable via 1-10V dimming systems. For 1-10V dimming, please consult your electrician, additional wiring may be required on site.

Dimensions: Coppelia Small

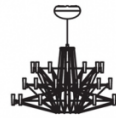
Ø68cm
Height: 42cm

Coppelia

Ø101cm
Height: 54cm

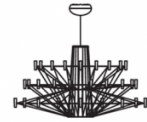
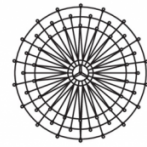
16 cm x 8 cm ceiling canopy
400 cm cable length

68cm | 26.7"



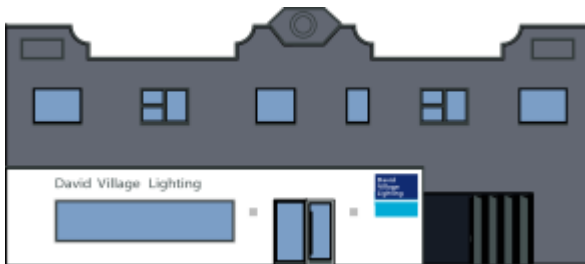
Coppelia Small

101cm | 39.8"



54cm | 21.3"

Coppelia



For all sales and technical enquiries, please contact:

+44 (0)114 263 4266

info@davidvillagelighting.co.uk

www.davidvillagelighting.co.uk