

wästberg

## Wastberg Studioilse w084 T1

LA4623

SOURCE: <https://www.davidvillagelighting.co.uk/product/wastberg-studioilse-w084-t1/17577>



### PRODUCT DESCRIPTION

Wastberg Studioilse w084 T1 designed by Ilse Crawford. The w084 studioilse lamp is a sturdy friend, unpretentious and always there for us. We chose honest materials that carry clear messages: iron because of its feelings of stability, reliability, trust; wood because of its warmth and life, and mineral plastic because of its intimate glow, as well as its tactility. Then we combined the three, trying to achieve a certain oddness. There is an innate awkwardness in the directional light that we wanted to amplify - rather as with people, this is a sympathetic quality, not a sin.

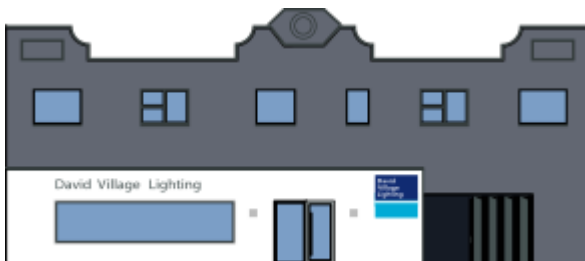
**Also available in a floor and wall mounted version, please contact us for more information.**

### PRODUCT SPECIFICATION

**Light Source:** 35W GY 6.35 halogen, 3000k, included

**Dimming:** Dimmable

**Dimensions:** 42 cm arm length  
13.5 cm base diameter  
18.4 cm shade diameter  
200 cm cable length



**For all sales and technical enquiries, please contact:**

+44 (0)114 263 4266

[info@davidvillagelighting.co.uk](mailto:info@davidvillagelighting.co.uk)

[www.davidvillagelighting.co.uk](http://www.davidvillagelighting.co.uk)