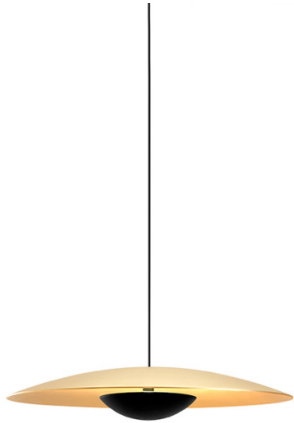


marset**Marset Ginger LED Suspension**

LA7838

SOURCE: <https://www.davidvillagelighting.co.uk/product/Marset-Ginger-LED-Suspension/17178>**PRODUCT DESCRIPTION****Designer:** Joan Gaspar**Marset Ginger Suspension**

The Ginger Suspension Light designed by Joan Gaspar in 2014 for Marset features an extraordinarily lightweight light disk which pays tribute to the drums of Ginger Baker of Cream, the 1960's rock band. The iconic disk is created from layers of wood and paper shaped under high pressure achieving a shade thickness of just 4mm, with a white interior to reflect the light and a high-quality wood finish on the outside.

Available in a variety of sizes from 20 to 60 and a range of finishes, the ever-growing Ginger Collection can be effectively used individually or grouped together, creating striking statements wherever it is used.

Marset and Gaspar liked the challenge that working with wood provided - a material that is typically hard to mold, a challenge that the Ginger collection neatly resolves. The [Ginger Collection](#) has been expanded over time to provide solutions to different lighting needs and is now available in pendant, table, wall, and floor lamp versions.

PRODUCT SPECIFICATION

Light 20 - 6W, 2700K, 139 Lumens
Source: 32 - 11.5W, 2700K, 350 Lumens
42 - 21.7W, 2700K, 698 Lumens
60 - 28.5W, 2700K, 1165 Lumens

IP Code: 20

Dimming: Dimmable using leading edge and trailing edge (Triac).

Dimensions: 20

Ø19.5cm
Depth: 3.9cm
Max Drop: 217.5cm
Cable Length: 300cm

32

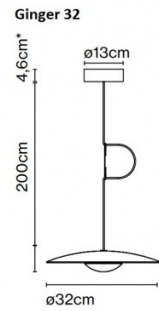
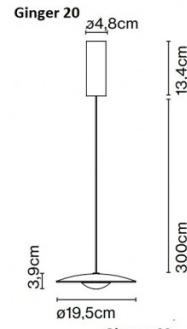
Ø32cm
Depth: 6cm depth
Max Drop: 210.5cm
Cable Length: 300cm

42

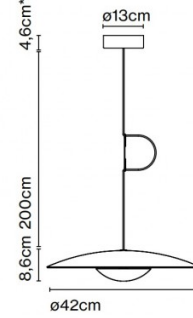
Ø42cm
Depth: 8.6cm
Max Drop: 213.1cm
Cable Length: 300cm

60

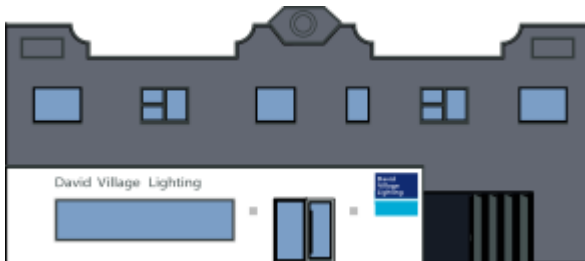
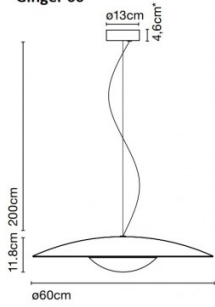
Ø60cm
Depth: 11.8cm
Max Drop: 216.4cm
Cable Length: 300cm



Ginger 42



Ginger 60



For all sales and technical enquiries, please contact:

+44 (0)114 263 4266

info@davidvillagelighting.co.uk

www.davidvillagelighting.co.uk