

Artemide

# Artemide Pausania LED TW Table Lamp

LA4263

SOURCE: <https://www.davidvillagelighting.co.uk/product/Artemide-Pausania-LED-TW-Table-Lamp/17082>



## PRODUCT DESCRIPTION

**Designer:** Ettore Sottsass

### Pausania LED TW by Artemide

Pausania was designed in 80s by Eric Sottsass, the gofather of contemporary Italian lighting. Pausania is reminiscent of the banker's table lamp which has been re-imagined with LED technology, making it energy efficient and eco-friendly. The lamp is part of the permanent collection in many museums, including the Metropolitan Museum of Art, New York. Pausania is also equipped with the latest Tunable White technology. The Tunable White property allows you to adjust the light intensity and colour temperature depending on the task at hand, changing it to create a different atmosphere.

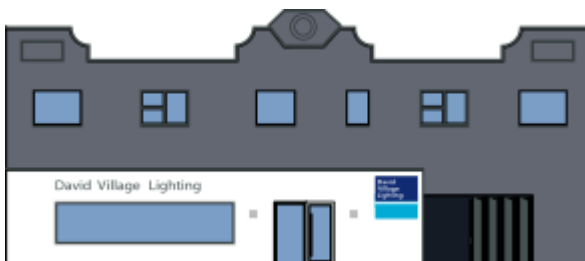
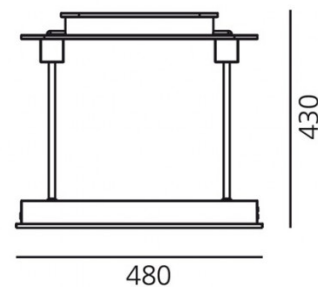
## PRODUCT SPECIFICATION

**Light Source:** 10W, 2700-6500K, 690 lumens

**IP Code:** 20

**Dimming:** Integrated dimmer included on the product.

**Dimensions:** 48 cm width  
43 cm height



**For all sales and technical enquiries, please contact:**

+44 (0)114 263 4266

info@davidvillagelighting.co.uk

www.davidvillagelighting.co.uk