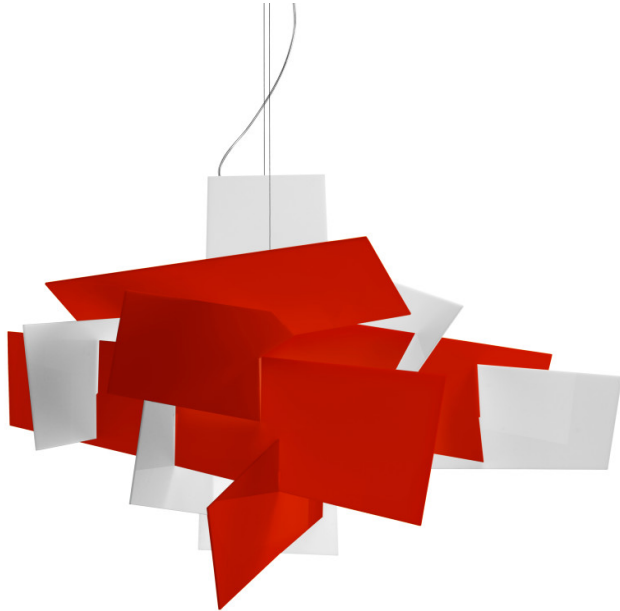


FOSCARINI

LA9376/LED

**Foscarini Big Bang XL LED
Pendant**

SOURCE: <https://www.davidvillagelighting.co.uk/product/Foscarini-Big-Bang-XL-LED-Pendant/17057>



PRODUCT DESCRIPTION

Designer: Enrico Franzolini & Vicente Garcia Jimenez

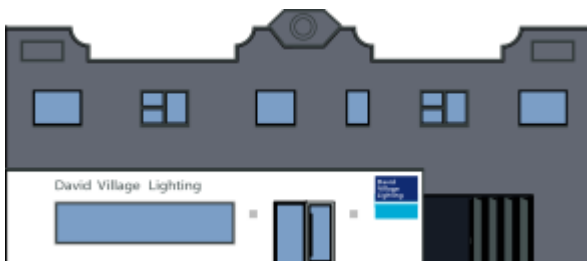
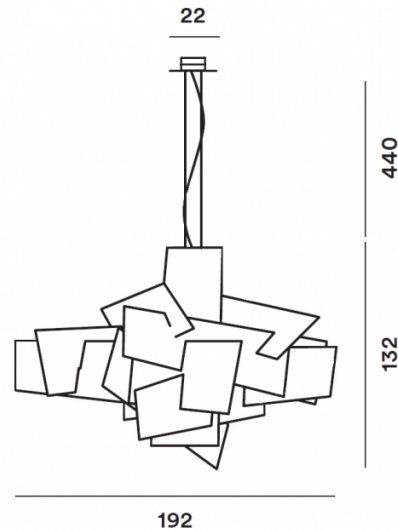
Foscarini Big Bang XL LED Pendant

The biggest light from the [Foscarini Big Bang collection](#), the Big Bang XL pendant is a compelling light that has a lively and electrifying energy. Taking inspiration from the motion of an explosion, the shade is constructed from methacrylate slabs, put together in a seemingly irregular way to create a geometric and angular shape.

The pendant is fitted with an LED light source which sits in the middle of the design so the light flows outwards at many angles. Playing between light and darkness, this pendant light creates an encompassing illumination that is functional and artistic. The Big Bang XL pendant light was created for large spaces or to use as a main light in the room. With a choice of either a white or red finish, this light is certainly an art piece that will make a big impact whether in the home or in a commercial interior.

PRODUCT SPECIFICATION

- Light Source:** 87W, 3000K, 9126 Lumens
- IP Code:** 20
- Dimming:** Dimmable via Dali dimming systems or Push to make/ switch dimming. Please consult your electrician, additional wiring may be required on-site.
- Dimensions:** Body: Ø192cm
Body Height: 132cm
Ceiling Rose: Ø22cm
Cable Length: 440cm



For all sales and technical enquiries, please contact:

+44 (0)114 263 4266

info@davidvillagelighting.co.uk

www.davidvillagelighting.co.uk