



Centrelight LED Multi Suspension

CL2202

SOURCE: <https://www.davidvillagelighting.co.uk/product/Centrelight-LED-Multi-Suspension/16836>



PRODUCT DESCRIPTION

Centrelight LED Multi Suspension.

Cluster feature light formed of blown glass spheres displayed at varying heights. Each sphere is connected to a steel rod, giving creative style when gathered at the ceiling rose. Choose between semi-transparent white or metallised mirror finished spheres. A double high-efficiency LED module is enclosed in the centre of the chandelier, generating warm diffused indirect lighting.

Available in two sizes:

40 cm Diameter

50 cm Diameter

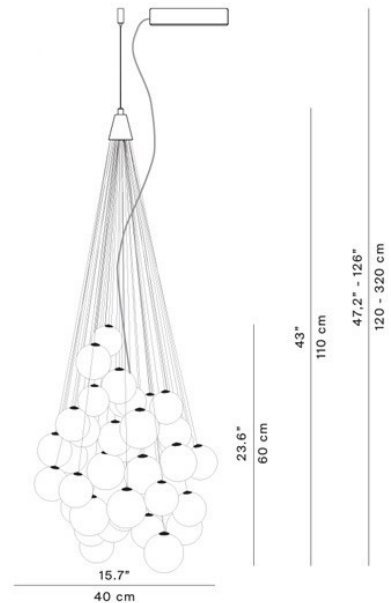
Lamp:

25Watt LED

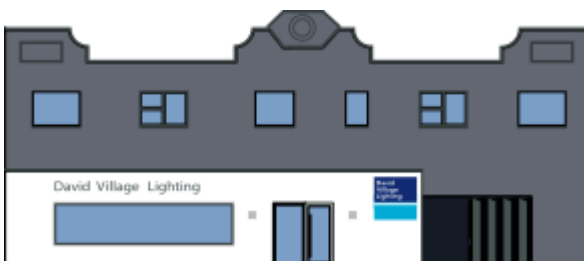
Option of 2700K or 3000K

Dimmable by wall control.

PRODUCT SPECIFICATION



weight 2,9 Kg



For all sales and technical enquiries, please contact:

+44 (0)114 263 4266

info@davidvillagelighting.co.uk

www.davidvillagelighting.co.uk