

# DCW éditions Mantis BS1 Floor Lamp

LA4051

SOURCE: <https://www.davidvillagelighting.co.uk/product/DCW-ditions-Mantis-BS1-Floor-Lamp/16829>



## PRODUCT DESCRIPTION

Designer: Bernard Schottlander

### Mantis BS1 Floor Lamp by DCW éditions

The Mantis BS1 is part of the [DCW éditions Mantis collection](#), a range designed by Bernard Schottlander in 1951. A welder and sculpture by trade, Schottlander uses movement as his motivation for the Mantis BS1 floor lamp, creating flexibility and fluidity through metal.

The shade is made from aluminium using chasing and spinning techniques to create a unique shape that has curved and smooth lines. The lampshade creates a warm glow that can be directed as the shade can be moved. The body of the floor light can also be adjusted, as the base has 4 positions that the stem can sit in and the lamp can also be moved around 360°. A beautiful and functional floor lamp, the Mantis will not disappoint and can be used in a wide variety of settings.

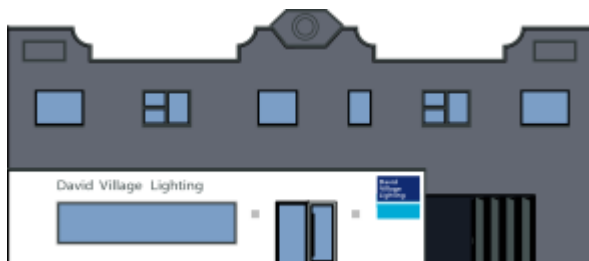
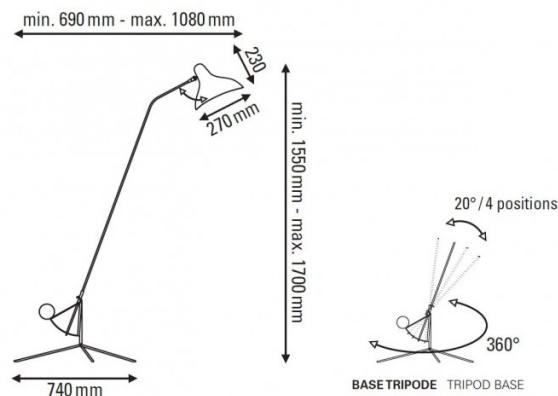
## PRODUCT SPECIFICATION

**Light Source:** 1 x max 15W E14 LED (excluded)

**IP Code:** 20

**Dimming:** In line on/off switch included on cable

**Dimensions:** Ø27cm shade  
155cm min. height  
170cm max. height  
74cm base  
200cm cable length



**For all sales and technical enquiries, please contact:**

+44 (0)114 263 4266

[info@davidvillagelighting.co.uk](mailto:info@davidvillagelighting.co.uk)

[www.davidvillagelighting.co.uk](http://www.davidvillagelighting.co.uk)