

LA3969

SOURCE: <https://www.davidvillagelighting.co.uk/product/Prandina-Extra-Pendant/16738>



PRODUCT DESCRIPTION

Designer: Mengotti/Prandina

Extra Pendant light by Prandina

Designed in 1994, the Extra pendant still remains one of Prandina's bestsellers, an enduring and timeless design that is distinct and well made. The lampshade is distinguished by its oval shape and diffuses the light so a far-reaching soft glow is achieved.

This pendant would be perfect for many spaces, being versatile enough to fit into small or large rooms, in lounges, kitchens, dining areas or bedrooms. The Extra pendant light is available in 2 colours and sizes which means you can buy several to put in a row or cluster to create a stunning light feature. Alternatively, buy one to have an effective more minimalist look, whilst still having maximum impact from one of Prandina's most stylish designs.

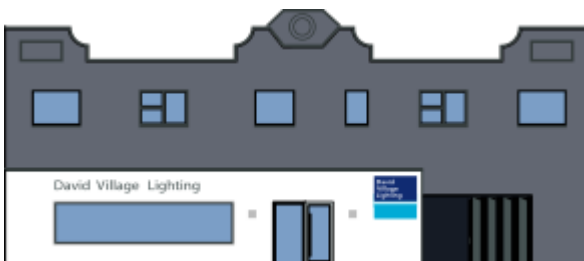
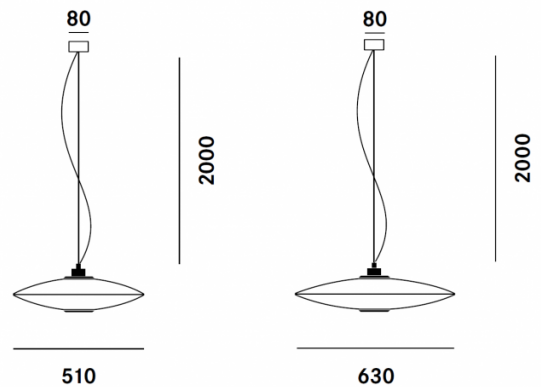
PRODUCT SPECIFICATION

Light Source: 1 x E27 LED (excluded)

IP Code: 20

Dimensions: S1 - Ø51cm
S3 - Ø63cm

8cm ceiling rose
2m cable length



For all sales and technical enquiries, please contact:

+44 (0)114 263 4266

info@davidvillagelighting.co.uk

www.davidvillagelighting.co.uk