

Kartell

Kartell Sottsass Calice Vase

LA3885

SOURCE: <https://www.davidvillagelighting.co.uk/product/Kartell-Sottsass-Calice-Vase/16647>

PRODUCT DESCRIPTION

Designer: Ettore Sottsass

Kartell Sottsass Calice Vase

The Calice was designed by Ettore Sottsass as part of the "Kartell goes Sottsass - A Tribute to Memphis" collection. The collection is a tribute to the Memphis Group, an Italian group that that designed postmodern furniture, fabrics and many other objects. The Calice represents the same inspirations as with the Memphis Group's, the Art Deco and Pop Art.

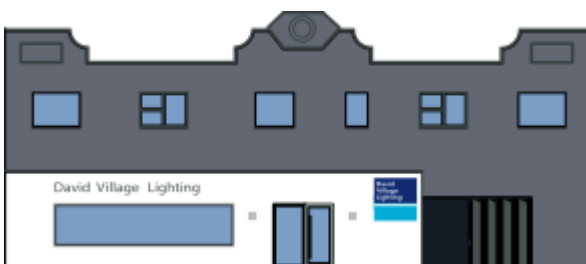
The Calice vase, in the shape of a chalice or goblet, is the perfect colour splash for your home. Whether indoors around the house, on the dining table, in the living room, on the window stool. Available in 5 opaque options: black, pink, green, violet and red. Ettore's collection also includes the [Pilastro](#) and [Colonna](#) stools.

Material:
Painted batch-dyed thermoplastic technopolymer



PRODUCT SPECIFICATION

Dimensions: 48 cm height
Ø 30 cm



For all sales and technical enquiries, please contact:

+44 (0)114 263 4266

info@davidvillagelighting.co.uk

www.davidvillagelighting.co.uk