



# Kartell Planet LED Pendant Light

LA3734/P

SOURCE: <https://www.davidvillagelighting.co.uk/product/Kartell-Planet-LED-Pendant-Light/16420>

## PRODUCT DESCRIPTION

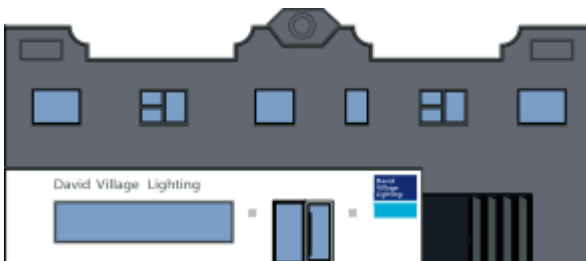
### Planet Pendant Light by Kartell

A feature light that is instantly recognisable by its spherical diffuser and crystal illusion design, the Planet Pendant Light by Kartell was designed by Tokujin Yoshioka as part of the [Planet collection](#).

With an adjustable cable and available in three colours, yellow, crystal and smoke, the Planet Pendant can be used as a stand-out centrepiece light, working best in a dining space or lounge area. Purchase either a single pendant to have a simple yet striking effect or buy several to create a clustered and extravagant light feature to produce an exuberant design scheme in your room.

## PRODUCT SPECIFICATION

- Light Source:** 22W, 2700K
- IP Code:** 20
- Dimming:** Non-dimmable
- Dimensions:** Ø 33 cm shade  
27 cm shade height  
38-232 cm cable length



**For all sales and technical enquiries, please contact:**

+44 (0)114 263 4266

[info@davidvillagelighting.co.uk](mailto:info@davidvillagelighting.co.uk)

[www.davidvillagelighting.co.uk](http://www.davidvillagelighting.co.uk)