



# Bover Tibeta 01 LED Pendant

LA3728

SOURCE: <https://www.davidvillagelighting.co.uk/product/Bover-Tibeta-01-LED-Pendant/16404>



## PRODUCT DESCRIPTION

**Designer:** Christophe Mathieu

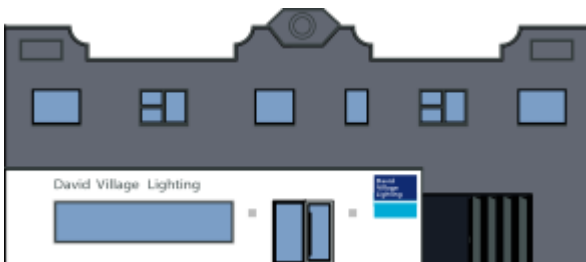
### Bover Tibeta 01 LED Pendant

Bover Tibeta 01 LED Pendant is the most slender in the Tibeta collection. It is available in three different sizes and shapes which can be used either individually or in groups. Designed by Christophe Mathieu, the Tibeta 01 was developed for the Spanish manufacturing company Bover, it is crafted from spun aluminium with a Methacrylate diffuser. The surface of the aluminium shade is shiny but not completely smooth, it boasts fine, regular cross grooves which give the luminaire some texture.

The LED light output grants only a downward light beam, ensuring the area under the Tibeta 01 Suspension Light is optimally illuminated, making a beautiful and unique task light. The LEDs can be dimmed with a Triac dimmer in order to personalise the ambience of your room. Whether displayed as a singular suspension or grouped together to create a cluster, Tibeta 01 proves to be a stylish lighting solution above dining tables, kitchen islands or counters - the metallic finish and the textured shade radiate elegance.

## PRODUCT SPECIFICATION

- Light Source:** 8.7W, 3000K, 610 Lumens
- IP Code:** 20
- Dimming:** Dimmable via Triac dimming.
- Dimensions:** Ø12cm  
Shade Height: 18cm  
Maximum Drop Height: 200cm  
Ceiling Rose: Ø11cm



**For all sales and technical enquiries, please contact:**

+44 (0)114 263 4266

[info@davidvillagelighting.co.uk](mailto:info@davidvillagelighting.co.uk)

[www.davidvillagelighting.co.uk](http://www.davidvillagelighting.co.uk)