

GUBI 

Gubi Multi-Lite Pendant

LA3703

SOURCE: <https://www.davidvillagelighting.co.uk/product/Gubi-Multi-Lite-Pendant/16372>



PRODUCT DESCRIPTION

Designer: Louis Weisdorf

Gubi Multi-Lite Pendant

The Gubi Multi-Lite was originally designed in 1972 by Danish designer Louis Weisdorf, and is part of the wider [Multi-Lite collection](#). Comprised of two quarter-spherical movable shades surrounding the inner shade, this light allows you to transform the pendant, allowing for the light to emanate in upward, downward or asymmetrical directions. This design goes away from Weisdorf's usual style and is a clear example of his want for diversity.

With a chrome or brass ring holding the movable shades in place, this pendant is truly iconic and elegant. This light is suitable for a range of home settings and with the choice of 7 colours with a brass frame and 3 colours with a chrome frame, this light can easily tie in to any colour scheme. Create a simple and atmospheric look with one pendant or create a stunning multi-levelled light feature by buying multiple pendants.

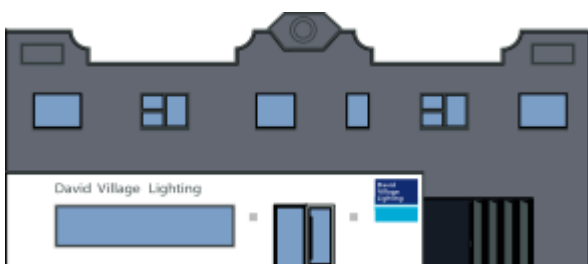
PRODUCT SPECIFICATION

Light Source: 1 x max 42W E27 (excluded)

IP Code: 20

Dimming: Dimmable via mains phase dimming

Dimensions: Ø36cm
36cm height
400cm cord



For all sales and technical enquiries, please contact:

+44 (0)114 263 4266

info@davidvillagelighting.co.uk

www.davidvillagelighting.co.uk