

**FOSCARINI**

**Foscarini Birdie Pendant**

LA3622

SOURCE: <https://www.davidvillagelighting.co.uk/product/Foscarini-Birdie-Pendant/16253>



**PRODUCT DESCRIPTION**

**Designer:** Ludovica & Roberto Palomba

**Birdie Pendant Light by Foscarini**

The Foscarini Birdie Pendant Light, alongside the rest of the [Foscarini Birdie collection](#) is inspired by the poetic image of a bird on a branch, in a range of forms on the wings of its designers' creativity and Foscarini's research. Each version of the Birdie light is a design in its own right, although all are always recognisably part of the Birdie range with its stylised image of a twig.

The Birdie pendant emits a soft, downward light that is perfect for hanging over tables or surfaces, creating a spotlight or an ambient light for the room. This pendant is available in 2 sizes, small or large, so you can find the right fit, or mix and match sizes to create variety in your interior. Use singularly, in rows or clusters to suit your needs and create a playful decoration in your space.

**PRODUCT SPECIFICATION**

**Light Source:** **Small:** 1 x Max 70W E27 (excluded)  
**Large:** 1 x Max 150W E27 (excluded)

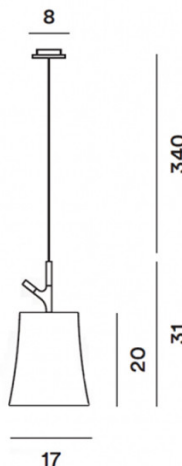
**IP Code:** 20

**Dimming:** Dimmable via mains phase dimming.

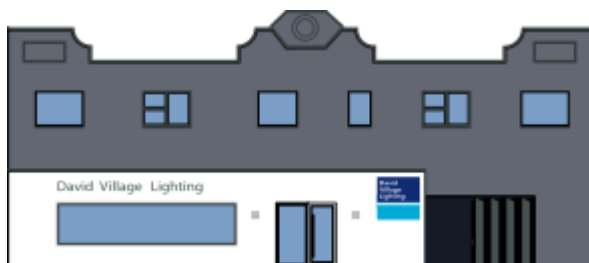
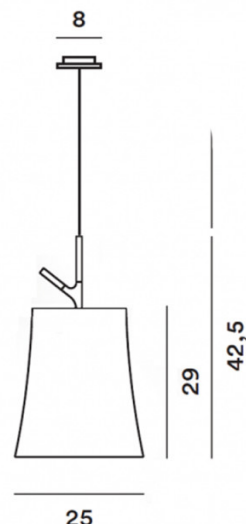
**Dimensions: Small:**  
Shade: Ø17cm  
Shade Height: 20cm  
Ceiling Rose: Ø8cm  
Cable Length: 340cm

**Large:**  
Shade: Ø25cm  
Shade Height: 29cm  
Ceiling Rose: Ø8cm  
Cable Length: 340cm

Small:



Large:



**For all sales and technical enquiries, please contact:**

+44 (0)114 263 4266

info@davidvillagelighting.co.uk

www.davidvillagelighting.co.uk