

wästberg

Wastberg Lindvall W124 S2  
Pendant

LA3602

SOURCE: <https://www.davidvillagelighting.co.uk/product/Wastberg-Lindvall-W124-S2-Pendant/16209>



PRODUCT DESCRIPTION

Wastberg Lindvall w124 s2 Medium  
Suspension

Archetypical lamp inspired by its original predecessors - the oil lamp or the kerosene lamp or even candle sticks - together with shades that used to sit on lamps I grew up with - lamps with an incandescent light bulb and a conical lampshade.

The shades are handmade and the whole lamps are hand brushed and mat lacquered.

Glare-protecting Shade and Diffuser.

Indirect light through the open upper part of the shade, covered by a diffuser.

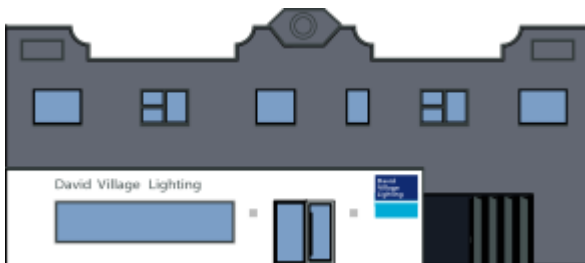
Direct light through the open bottom part of the shade, covered by diffuser.

PRODUCT SPECIFICATION

**Light Source:** 2 x E14 40W max (excluded)

**Dimming:** Dimmable via mains phase dimming

**Dimensions:** 32.8 cm shade width  
20 cm shade length  
3m textured cable length



For all sales and technical enquiries, please contact:

+44 (0)114 263 4266

info@davidvillagelighting.co.uk

www.davidvillagelighting.co.uk