

# GUBI

## Gubi G-10 Pendant

LA3560

SOURCE: <https://www.davidvillagelighting.co.uk/product/Gubi-G-10-Pendant/16083>



### PRODUCT DESCRIPTION

**Designer:** Greta M. Grossman

### G-10 Pendant by Gubi

The G-10 pendant is a part of the [G-10 light collection](#), designed by the icon Greta M. Grossman in 1950. As another one of her undiscovered designs, the G-10 is called so as this light was the 10th design by Grossman for the Swedish manufacturer Bergboms.

This light is characterised by its distinctive lampshade which has clear lines as well as a rough surface and brass details, giving the light a truly unique look. The light can be enjoyed as a singular piece or as part of a cluster of lights, bringing a fresh and playful aesthetic to the room and the satin opal glass shade means that glare is minimal yet light is directional. This light works best hanging over a dining or kitchen table but could work well with other lighting in lounging areas too.

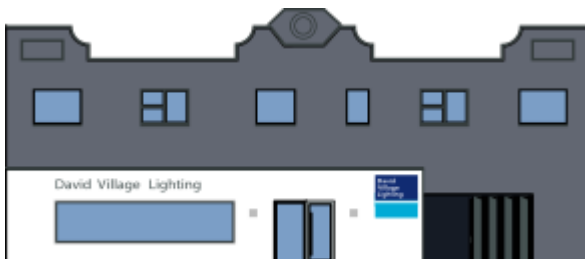
### PRODUCT SPECIFICATION

**Light Source:** 1 x max 60W E27 (excluded)

**IP Code:** 20

**Dimming:** Dimmable via mains phase dimming

**Dimensions:** Ø36.5cm shade  
21.4cm shade length  
Ø8cm ceiling rose  
400cm cable length



**For all sales and technical enquiries, please contact:**

+44 (0)114 263 4266

[info@davidvillagelighting.co.uk](mailto:info@davidvillagelighting.co.uk)

[www.davidvillagelighting.co.uk](http://www.davidvillagelighting.co.uk)