

Artemide

Artemide Meteorite Table Lamp

LA7133/48T

SOURCE: <https://www.davidvillagelighting.co.uk/product/Artemide-Meteorite-Table-Lamp/16066>



PRODUCT DESCRIPTION

Designer: Pio & Tito Toso

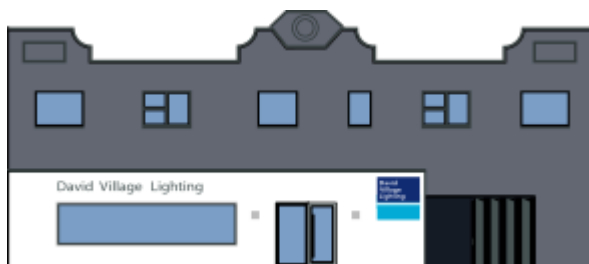
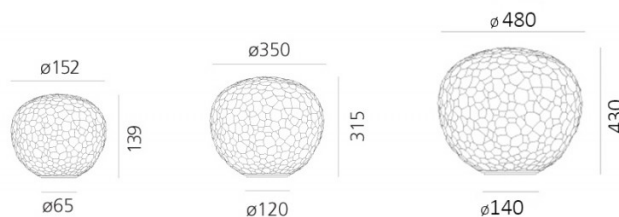
Meteorite Table Lamp by Artemide

The Meteorite lights are mouth blown and then frosted, with a double-glass layer the result is a majestic lighting depth. Brothers and architects, Pio and Tito Toso took the mouth-blown technique a step further with the Venetian beaten glass. The result is a raw and unfinished texture on the glass diffuser. A fitting name, as the Meteorite lights very much resemble the glass-like rock debris that travel through outer space.

The Meteorite Table Lamp is available in three sizes: Meteorite 15, Meteorite 35 and Meteorite 48. The Meteorite table lamps are also available in a table stem version, in two sizes. The family also includes suspension and ceiling/wall lights. All lights are available with a blown glass, double layered diffuser that emits a soft and diffused light.

PRODUCT SPECIFICATION

- Light** Meteorite 15 - 1 x 4W LED E14 (excluded)
Source: Meteorite 35 - 1 x 21W LED DIM E27 (excluded)
 Meteorite 48 - 1 x 21W LED DIM E27 (excluded)
IP Code: 20
Dimming: Meteorite 15 - Non dimmable
 Meteorite 35 & 48 - In line dimmer included on cable.
Dimensions: Meteorite 15 - Ø15.2cm, 13.9cm H, Ø6.5cm base
 Meteorite 35 - Ø35cm, 31.5cm H, Ø12cm base
 Meteorite 48 - Ø48cm, 43cm H, Ø14cm base



For all sales and technical enquiries, please contact:

+44 (0)114 263 4266

info@davidvillagelighting.co.uk

www.davidvillagelighting.co.uk