

FOSCARINI

Foscarini Chouchin Reverse Pendant

LA9232R2

SOURCE: <https://www.davidvillagelighting.co.uk/product/Foscarini-Chouchin-Reverse-Pendant/15990>



PRODUCT DESCRIPTION

Designer: Ionna Vautrin

Chouchin Reverse Pendant Light by Foscarini

The Chouchin Reverse pendant has the same design as the [Chouchin pendant](#), with the colours reversed. The lampshade has a white finish with the bottom having a lovely splash of colour. This pendant is inspired by traditional Japanese lanterns which the light is named after. Distinguished by a round design with smooth lines, the shade is made from blown glass and is a stylish and beautiful light.

The Chouchin Reverse pendant light emits a downward light that is soft and inviting, perfect for creating a warm atmosphere and for hanging over tables and surfaces. Wonderful for many settings, this pendant light can be used in lounges, kitchens, offices and more in professional and domestic interiors. Mix and match the 3 different versions and colours to create variety or use singularly as a main light in the room.

PRODUCT SPECIFICATION

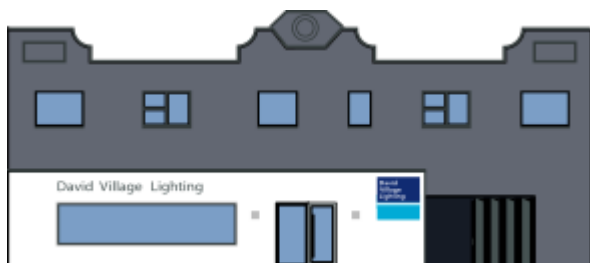
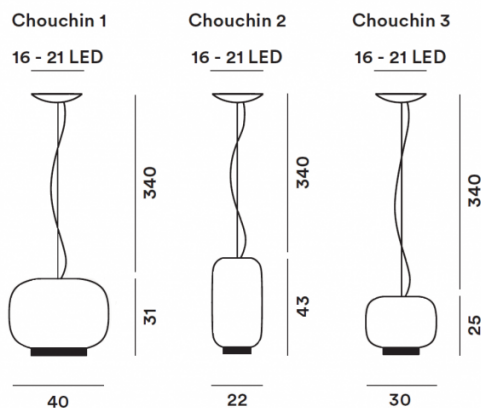
Light Source: 1 x E27 21W max (included by Foscarini)

IP Code: 20

Dimming: Dimmable via Triac dimming

Dimensions: **Chouchin 1** - Ø40cm, H 31cm
Chouchin 2 - Ø22cm, H 43cm
Chouchin 3 - Ø30cm, H 25cm

340cm drop



For all sales and technical enquiries, please contact:

+44 (0)114 263 4266

info@davidvillagelighting.co.uk

www.davidvillagelighting.co.uk