



# Bega 99366 In Ground LED - Medium

LA3388

SOURCE: <https://www.davidvillagelighting.co.uk/product/Bega-99366-In-Ground-LED---Medium/15838>



## PRODUCT DESCRIPTION

Bega 99366 In Ground - medium recessed LED, symmetrical floodlight. Safety glass clear. Made of stainless steel. Complete with housing installation. A separate power supply unit is required to operate the luminaires - contact use for prices: 0114 263 4266. **Note: driver required.**

LED floodlight for recessed installation in compacted surfaces with  $\varnothing$  45 mm provided by the customer. Drive-over luminaire from vehicles with pneumatic tyres. For pressure load up to 1,000 kg.

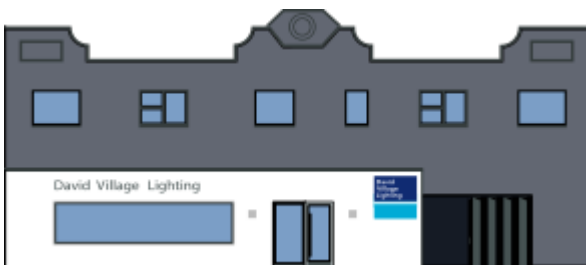
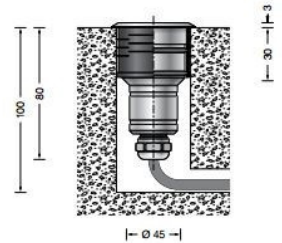
**Please note:**

Luminaire must not be used for installation in road lanes, where the fixture is exposed to a horizontal strain due to braking, acceleration and change of direction.

## PRODUCT SPECIFICATION

Light Source: 1.4W, 3000K, 133 Lumens

IP Code: 68



For all sales and technical enquiries, please contact:

+44 (0)114 263 4266

info@davidvillagelighting.co.uk

www.davidvillagelighting.co.uk