



# Bega 99356 In Ground LED - Small

LA3387

SOURCE: <https://www.davidvillagelighting.co.uk/product/Bega-99356-In-Ground-LED---Small/15837>



## PRODUCT DESCRIPTION

Bega 99356 In Ground - small recessed LED, symmetrical floodlight. Safety glass clear. Made of stainless steel. Complete with housing installation. A separate power supply unit is required to operate the luminaires - contact use for prices: 0114 263 4266. **Note: driver required.**

LED floodlight for recessed installation in compacted surfaces with  $\varnothing$  70 mm provided by the customer. Drive-over luminaire from vehicles with pneumatic tyres. For pressure load up to 1,000 kg.

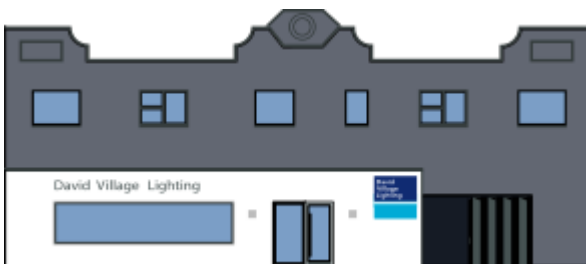
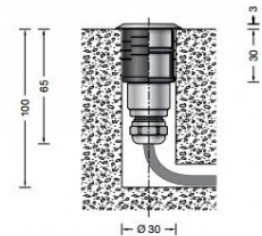
In the centre of the glass surface the luminaire attains an operating temperature of only 35 °C.

Please note:  
Luminaire must not be used for installation in road lanes, where the fixture is exposed to a horizontal strain due to braking, acceleration and change of direction.

## PRODUCT SPECIFICATION

Light Source: 0.5W, 3000K, 32 Lumens

IP Code: 68



For all sales and technical enquiries, please contact:

+44 (0)114 263 4266

[info@davidvillagelighting.co.uk](mailto:info@davidvillagelighting.co.uk)

[www.davidvillagelighting.co.uk](http://www.davidvillagelighting.co.uk)