

ANGLEPOISE®

# Anglepoise Original 1227 Wall Light

LA3183

SOURCE: <https://www.davidvillagelighting.co.uk/product/Anglepoise-Original-1227-Wall-Light/15607>



## PRODUCT DESCRIPTION

Designer: George Carwardine

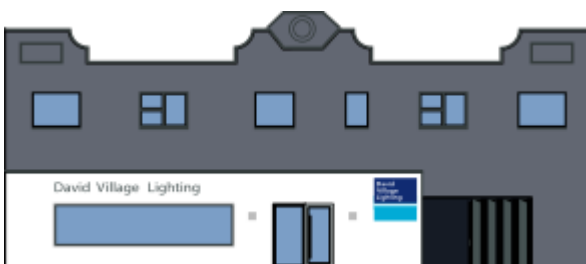
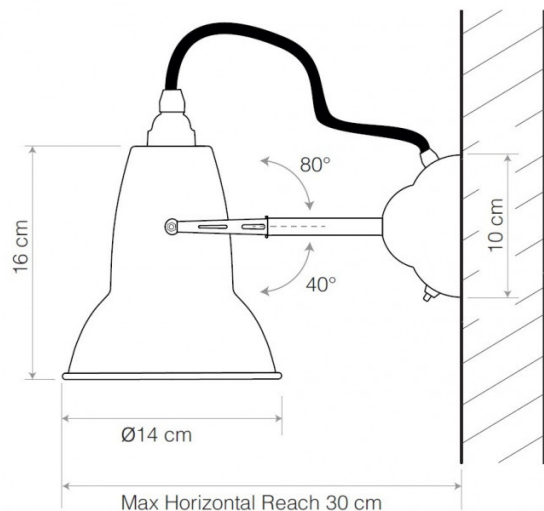
### Anglepoise Original 1227 Wall Light

Getting its design from George Carwardine's classic [Original 1227 table lamp](#), the 1227 wall light is a truly modernistic adaption of an iconic design. With chrome fittings and a rotational shade, this light showcases function and style and works perfectly in both home and work settings. The light has a built-in switch in the base for ease but also has the option to be hard-wired to an external light switch, giving you the power to choose how you wish the light to function.

Available in three classic colours to provide a timeless touch to the room, the Original 1227 wall lamp is completely versatile and can both create a stunning spotlight and a subtle lighting atmosphere. To make a real impact, match with other lights from the [Anglepoise Original 1227 collection](#), to create a room inspired by Carwardine's innovative design.

## PRODUCT SPECIFICATION

- Light Source:** 1 x Max 10W E27 (excluded)
- IP Code:** 20
- Dimming:** Integrated on/off switch on the product.
- Dimensions:** Shade: Ø14cm  
Shade Height: 16cm  
Maximum Reach (from wall to shade): 30cm  
Wall Plate: Ø10cm



For all sales and technical enquiries, please contact:

+44 (0)114 263 4266

[info@davidvillagelighting.co.uk](mailto:info@davidvillagelighting.co.uk)

[www.davidvillagelighting.co.uk](http://www.davidvillagelighting.co.uk)